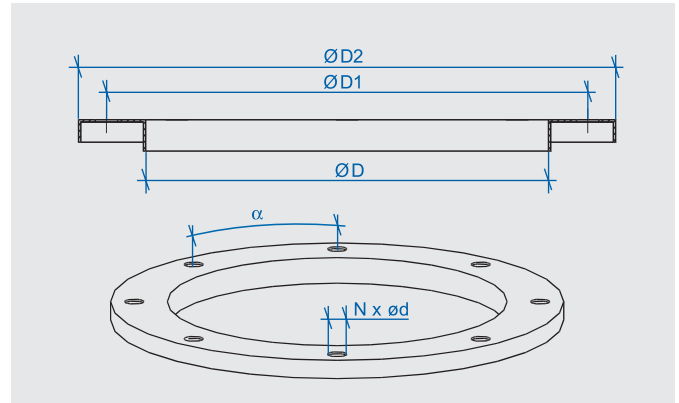
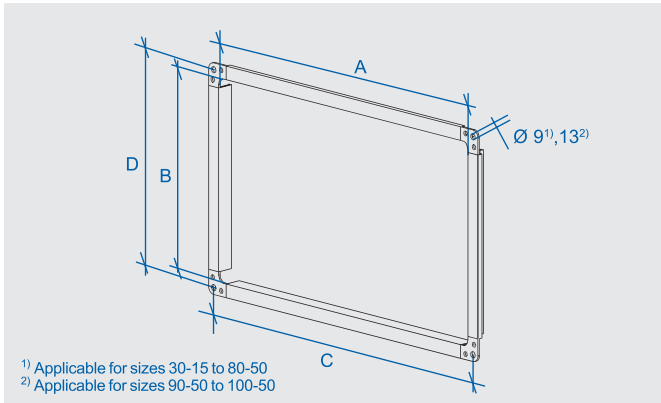


EP, GK Counter-Flanges



	A (mm)	B (mm)	C (mm)	D (mm)	m ±10% (kg)
EP 20/30-15	300	150	320	170	0,51
EP 20/40-20	400	200	420	220	0,65
EP 20/50-25	500	250	520	270	0,80
EP 20/50-30	500	300	520	320	0,85
EP 20/60-30	600	300	620	320	0,95
EP 20/60-35	600	350	620	370	1,02
EP 20/70-40	700	400	720	420	1,15
EP 20/80-50	800	500	820	520	1,35
EP 30 90-50	900	500	930	530	1,65
EP 30/100-50	1000	500	1030	530	1,95

	D (mm)	D1 (mm)	D2 (mm)	d (mm)	N	α	m ±10% (kg)
GK 180	180	215	240	10	8	45°	0,40
GK 200	200	235	260	10	8	45°	0,45
GK 225	225	260	285	10	8	45°	0,50
GK 250	250	285	310	10	8	45°	0,55
GK 280	280	315	340	10	8	45°	0,61
GK 315	315	350	375	10	12	30°	0,69
GK 355	355	390	415	10	12	30°	0,77
GK 400	400	445	480	12	12	30°	1,18
GK 560	560	605	640	12	16	22,5°	1,62

Application

EP counter-flanges are used to terminate the air-handling duct, and thus to enable its connection to Vento system standard elements.

Dimensional and Type Range

EP flanges are manufactured in all Vento dimensional ranges, from 30-15 to 100-50.

Materials

EP counter-flanges are made of standard 20 mm or 30 mm high bar flange profiles, which are rolled from galvanized steel sheets (min. Zn layer of 275 g/m²). Galvanized corner irons are pressed from 11 373 steel sheets.

Installation

These flanges can be mounted on the free ends of a square duct of corresponding dimensions using self-tapping screws or rivets. They must be sealed with permanently flexible cement.

Application

GK counter-flanges can be used to terminate the round air-handling duct at the place of connection to the inlets of RQ, RQ Ex, RS fans (not used if the RS fan is connected to a roof adaptor).

Dimensional and Type Range

GK counter-flanges are manufactured in nine dimensional ranges, from a diameter of 180 mm to 560 mm.

Materials

GK counter-flanges are made of galvanized steel sheets (min. Zn layer of 275 g/m²).

Installation

These flanges can be mounted on the free ends of a round duct of corresponding diameter using self-tapping screws or rivets. They must be sealed with permanently flexible cement.

