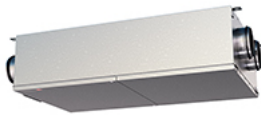


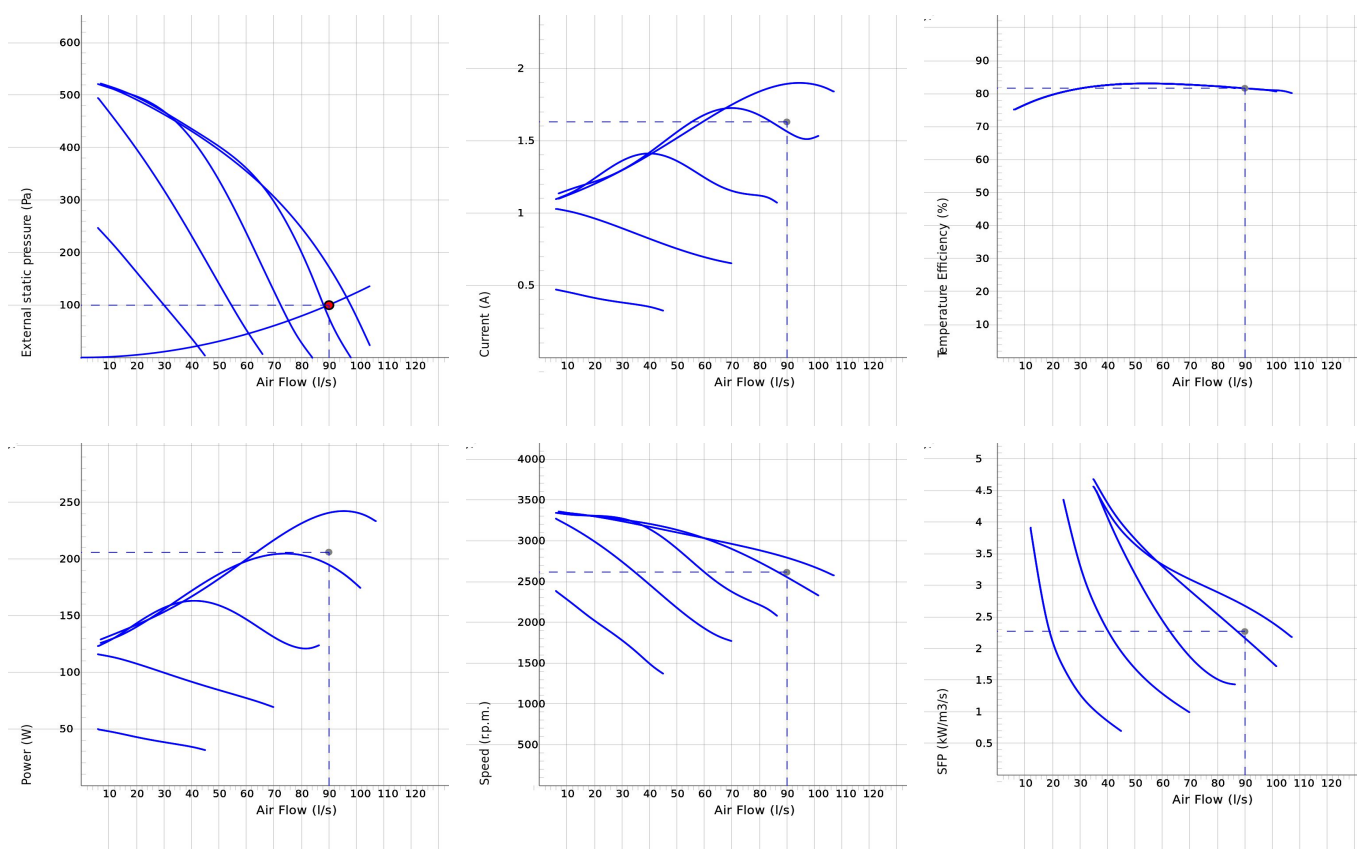
HERU 90 LP EC



- Energy recovery unit with low profile and side connections.
- Designed for supply and exhaust air ventilation with energy recovery.
- Suitable for installation in homes, offices and other premises where there are stringent requirements on the indoor environment.
- High temperature efficiency 82%, low energy consumption (SFP), low sound level, high operating reliability and provides clean indoor air.
- Unique design minimizes all thermal bridges.
- For easy handling, the unit is remote-controlled using the wireless control unit for operation and monitoring.
- Comes prepared for Modbus communication via RS485 (accessory needed).
- Airflow is generated by two silent radial fans with EC motors and impellers with forward curved blades.
- The fans are connected with quick connectors and are very easy to remove for cleaning.
- A regenerative, non-hygroscopic, aluminum rotating heat exchanger located in the center of the unit. The heat exchanger can also be removed for cleaning.
- Comes with panel filter ISO ePM1 60% as standard, for both exhaust and supply air. The filter is very easy to change.
- Integrated controls for heating/cooling.
- Available with or without integrated electric heater.
- The unit is constructed of double-layer galvanized steel sheet with insulation in between.
- For placement in warm areas. Ideal for mounting in small spaces such as in the ceiling.
- Available in either right-hand or left-hand design.
- Can be ordered with a connection for a cooker hood. This connection is routed past the rotor to prevent cooking odors from spreading back into the premises.

NOTE! The warranty of The HERU is only valid if accessories/equipment (e.g. filters) from H. Östberg AB are used.

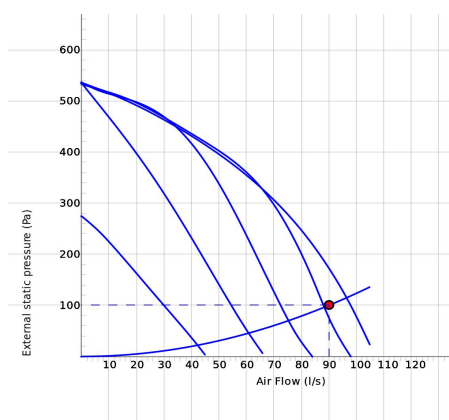
DIAGRAMS



Work Point

Air Flow (l/s)	External static pressure (Pa)	Power (W)	Speed (r.p.m.)	Current (A)	Efficiency (%)	SFP (kW/m ³ /s)	Voltage (V)
90	100	206	2613	1.63	81.6	2.27	8.4

SOUND DATA



	Tot	63	125	250	500	1k	2k	4k	8k
Supply Lw dB(A)	76	61	62	66	69	68	70	66	66
Extract Lw dB(A)	59	50	56	54	46	45	41	32	21
Surrounding Lw dB(A)	51	32	44	49	43	35	34	32	30
Surrounding Lp dB (A) 3m	44								

Work Point

Air Flow (l/s) 90	External static pressure (Pa) 100	Power (W) 206	Speed (r.p.m.) 2613	Current (A) 1.63	Efficiency (%) 81.6	SFP (kW/m3/s) 2.27	Voltage (V) 8.4
----------------------	--------------------------------------	------------------	------------------------	---------------------	------------------------	-----------------------	--------------------

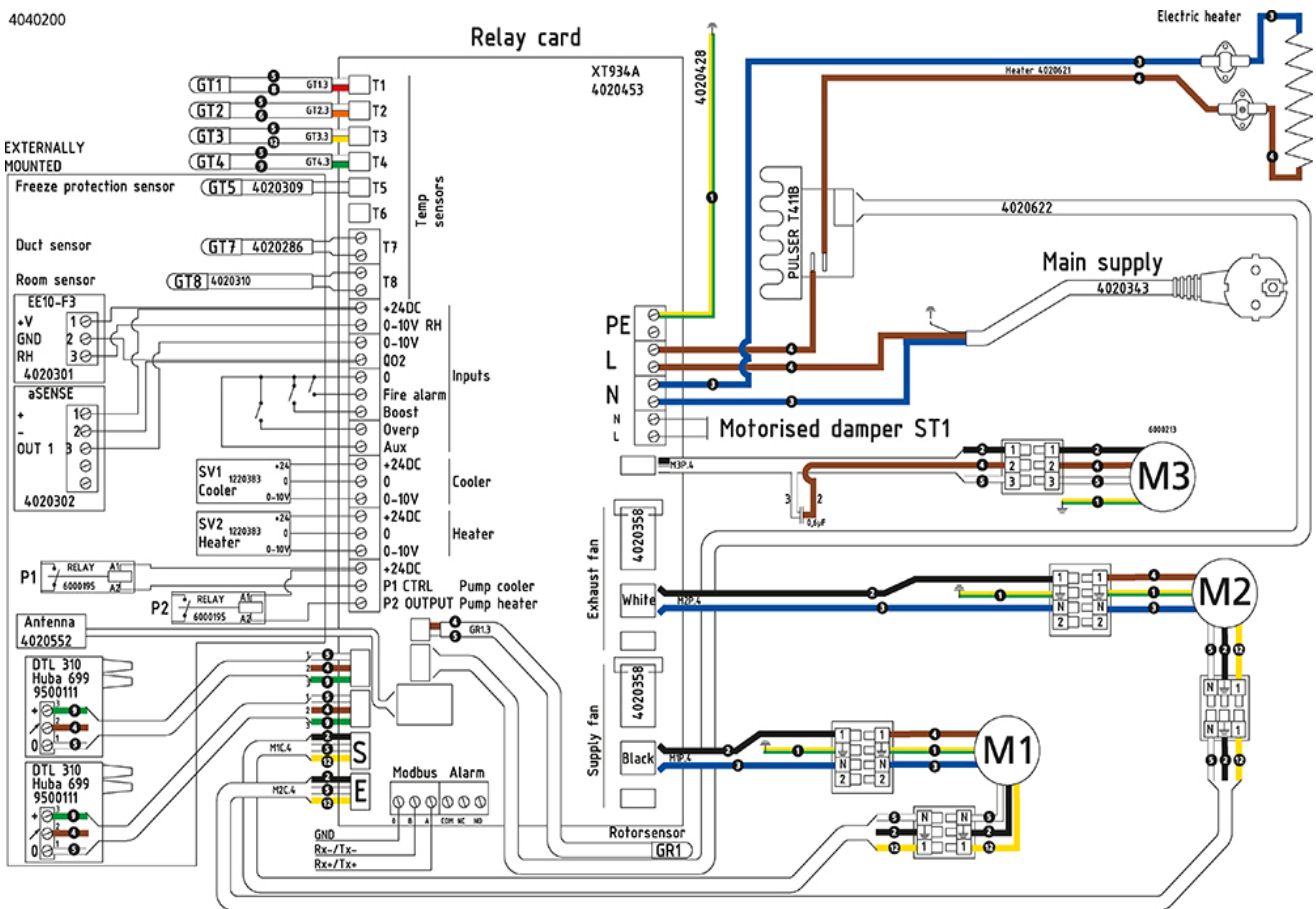
TECHNICAL DATA

Parameter	HERU 90 LP EC ARC 8010736		HERU 90 LP EC ALC 8010737		HERU 90 LP EC AR 8010738		HERU 90 LP EC AL 8010739	
	Value	Unit	Value	Unit	Value	Unit	Value	Unit
Voltage	230	V	230	V	230	V	230	V
Phase	1	~	1	~	1	~	1	~
Frequency	50	Hz	50	Hz	50	Hz	50	Hz
Power	1170	W	1170	W	1170	W	1170	W
Power, fans	242	W	242	W	242	W	242	W
Power, heater	900	W	900	W	900	W	900	W
Current	5.9	A	5.9	A	5.9	A	5.9	A
Current, fans	1.89	A	1.89	A	1.89	A	1.89	A
Current, heater	3.91	A	3.91	A	3.91	A	3.91	A
Speed	2710	r.p.m.	2710	r.p.m.	2710	r.p.m.	2710	r.p.m.
Sound pressure level at 3 m	46	dB(A)	46	dB(A)	46	dB(A)	46	dB(A)
Weight	46	kg	46	kg	46	kg	46	kg
Enclosure class	41	IP	41	IP	41	IP	41	IP
Duct connection	125	mm	125	mm	125	mm	125	mm
Max. flow	107	l/s	107	l/s	107	l/s	107	l/s
Max. pressure	532	Pa	532	Pa	532	Pa	532	Pa
Voltage range	220-240	V	220-240	V	220-240	V	220-240	V

ECODESIGN

Parameter	Value	Unit
(a) Manufacturer	Östberg	-
(b) Model code	HERU 90 LP EC	-
(c) SEC value	-38.34	kWh/m ²
SEC class	A	-
(d) Declared type	RVU / BVU	-
(e) Type of drive	Variable speed drive	-
(f) Type of heat recovery	Regenerative	-
(g) Thermal efficiency	82%	%
(h) Max. flow rate (@100Pa)	353	m ³ /h
(i) Power at max. flow rate	242	W
(j) Sound power level	49	dB LwA
(k) Reference flow rate	0.070	m ³ /s
(l) Reference pressure difference	50	Pa
(m) SPI	0.49	W/(m ³ /h)
(n) Type of control/ctrl factor	Local demand control/0.65	-
(o) External (and internal) leakage rate	N/A (N/A)	%
(p) Mixing rate	N/A	-
(q) Visual filter warning	In remote control	-
(r) Instruction supply/exhaust grilles	See manual	-
(s) Disassembly instructions	www.ostberg.com	-
(t) Airflow sensitivity	N/A	-
(u) Air tightness	N/A	m/s
(v) AEC	304	kWh
(w) AHS average	4562	kWh
AHS warmer	2063	kWh
AHS colder	8924	kWh

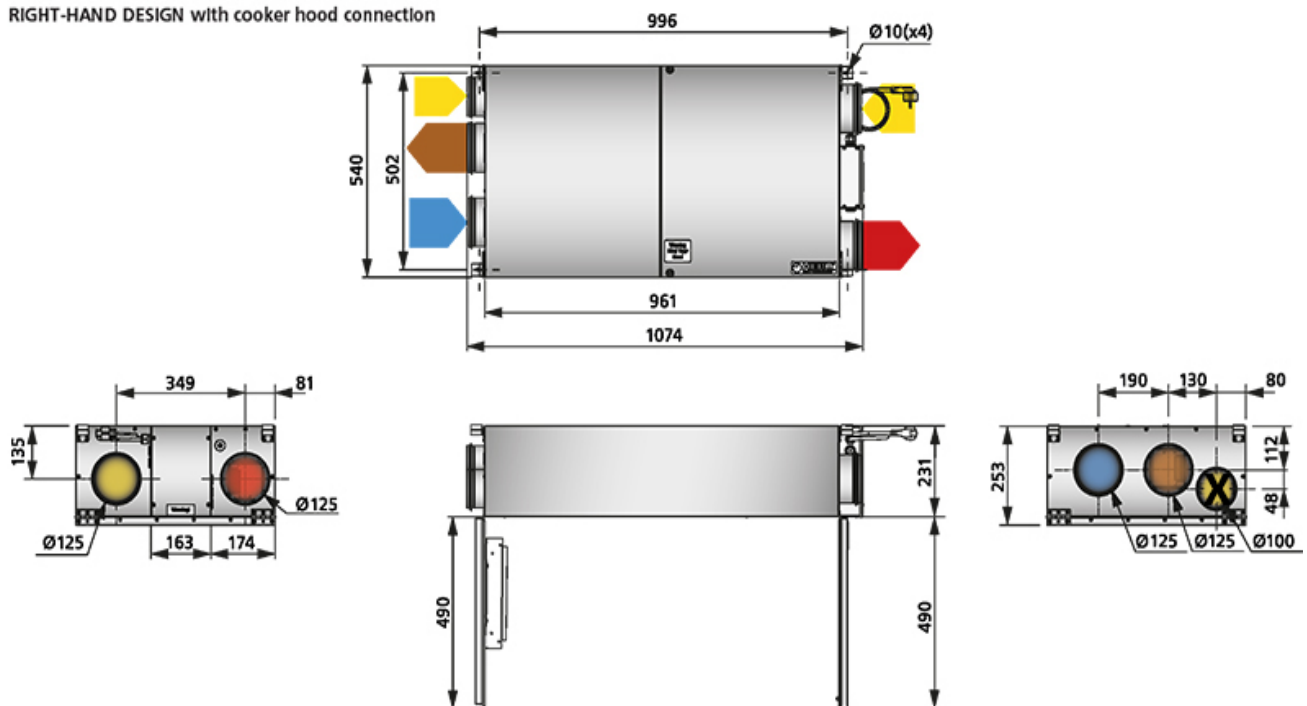
WIRING DIAGRAM



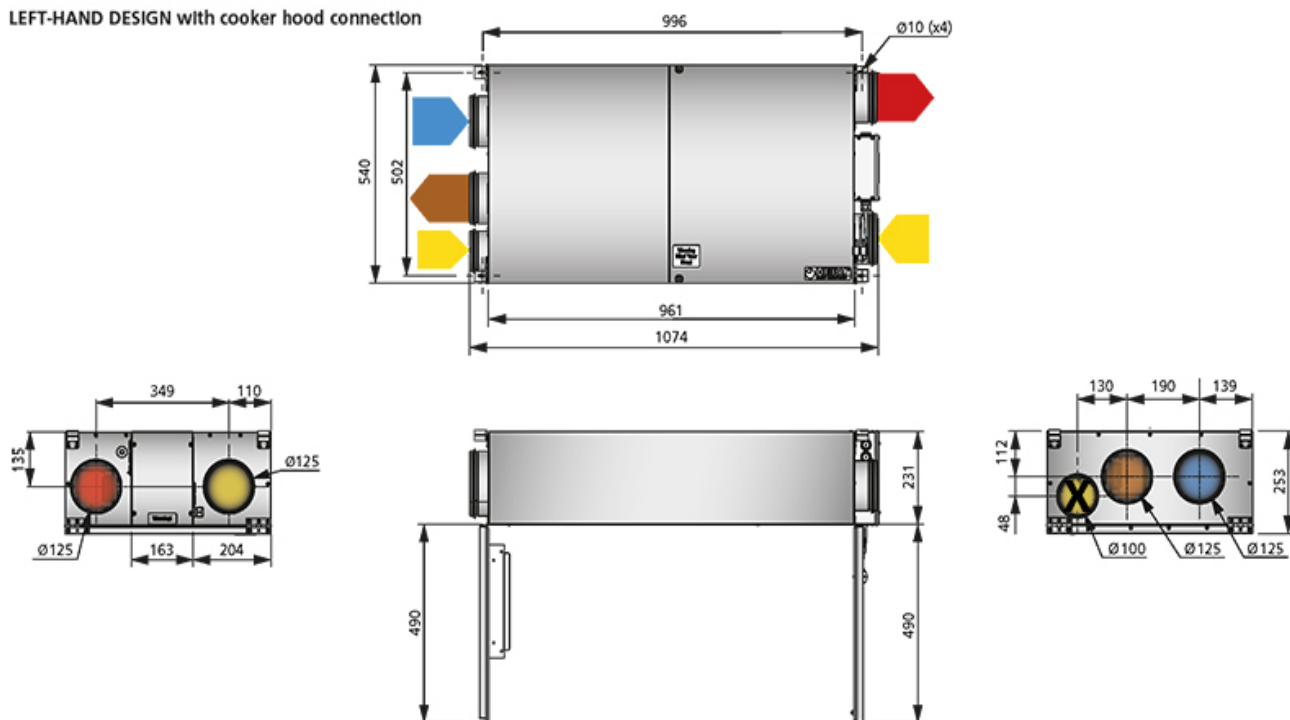
- Ⓜ = Fan Motor
- Ⓜ1 = Fan Motor
- Ⓜ2 = Fan Motor
- Ⓜ3 = Rotor Motor
- ① = Yellow/Green
- ② = Black
- ③ = Blue
- ④ = Brown
- ⑤ = White
- ⑥ = Orange
- ⑦ = Grey
- ⑧ = Red
- ⑨ = Green
- ⑩ = Violet
- ⑪ = Quick switch
- ⑫ = Yellow

DIMENSIONS

RIGHT-HAND DESIGN with cooker hood connection



LEFT-HAND DESIGN with cooker hood connection



ENGLISH

- Supply air
- Extract air
- Exhaust air
- Fresh air
- ⊗ Cooker hood

SVENSKA

- Tilluft
- Frånluft
- Avluft
- Uteluft
- ⊗ Spiskåpa

DEUTSCH

- Zuluft
- Abluft
- Fortluft
- Frischluft
- ⊗ Dunstabzugshaube

SUOMI

- Tuloilma
- Poistoilma
- Jäteilma
- Ulkoilma
- ⊗ Liesituuletin

ITALIANO

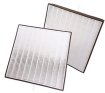
- Aria di immissione
- Aria di estrazione
- Sfiato
- Aria esterna
- ⊗ Cappa cucina

POLSKI

- Powietrze nawiew
- Powietrze wywiew
- Powietrze usuwane
- Powietrze z zewnątrz
- ⊗ Okapu kuchennego

ACCESSORIES

Mechanical accessories



Filter Kit HERU 50/90 LP



Silencer LDC 125



Outside wall hood 160

Electrical accessories



Remote control with Modbus



Control board



Heater Kit Water, HERU 62/70/90/95/100T, 50/90LP



Extension cable, antenna



Humidity/temperature sensor



Carbon dioxide sensor CO2



Room sensor



Freeze protection sensor



Duct sensor



Pressure Sensor Kit



Damper motor



Relay pump control