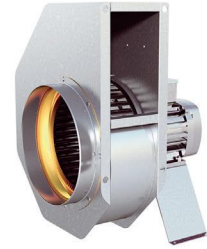


EXPLOSION PROOF ATEX CERTIFIED FANS

RFTX 200 A

7730005

- 3- phase radial fan with circular inlet connection.
- The RFTX is a safe choice for numerous applications in hazardous locations.
- The fan is intended for use where an explosive environment with gas can sometimes occur.
- The fan can only be used in zone 1 and 2.
- The ATEX fan is not subject to the ErP directive.
- Impeller with forward curved blades.
- The external rotor motor is separated from the air stream and has maintenance-free sealed ballbearings.
- RFTX cannot be speed controlled.
- Integrated junction box.
- External motor protection should be connected to the fan according to EN 60079-14:2014.
- Fan housing is manufactured from galvanized sheet steel with a nonsparking inlet cone made from copper.
- The fan is certified according to directive 2014/34/EC.
- Compliance with the standards EN 14986:2017 and EN ISO IEC 80079-36:2016.
- The fan is intended to be installed indoors in a duct system.
- Ex-marking II2G Ex h IIB + H2 T3 Gb.



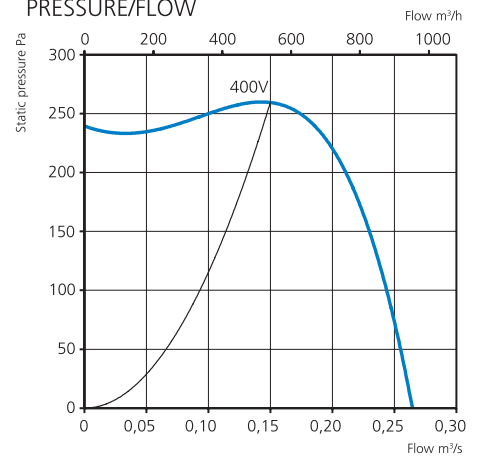
ACCESSORIES

- Outlet pipe RFTX 200 A/B Ø200
- Motor protection 0.40-0.63 A

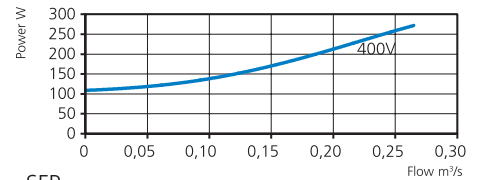
TECHNICAL DATA

Voltage	400 V
Frequency	50 Hz
Phase	3 ~
Current	0.60 A
Power	270 W
Speed	1300 r.p.m.
Max. temp of transported air	40 °C
Sound pressure level, 3 m	52 dB(A)
Weight	9.2 kg
Enclosure class	55 IP
Wiring diagram	4040116

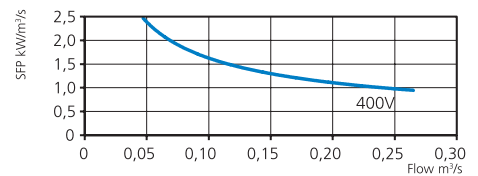
PRESSURE/FLOW



POWER/FLOW



SFP



SOUND DATA

	L _{wa} tot dB (A)	63	125	250	500	1K	2K	4K	8K
Surrounding 400 V	59	28	30	43	51	54	54	48	44
Outlet 400 V	70	59	63	61	61	64	60	60	52
Inlet 400 V	68	58	60	57	60	63	60	57	49

MORE INFORMATION



Find out the latest updated information about this product by visiting www.ostberg.com or scanning this QR code.

DIMENSIONS

