

ÖSTBERG

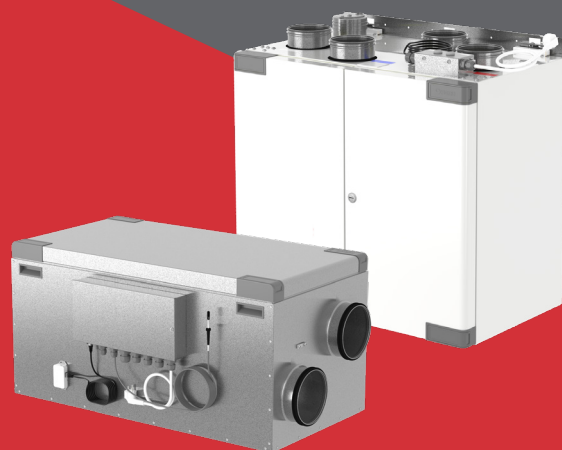


HERU 100-300 S/T



PRODUCT CATALOGUE 2024

# COMPACT ERV UNIT



energy  
efficient  
ventilation



Our mission is to create first-class indoor environments with the market's lowest energy consumption, best insulation and highest operating reliability – and all with the lowest possible sound levels.

With our HERU range, we do all this and more. We listened to our customers' requests and made a number of improvements to our already award-winning energy recovery unit. HERU recovers up to 86% of the used indoor heat (or cold) from the extract air.

Östberg develops and manufactures the ultramodern HERU energy recovery units for all types of homes, schools, offices and other premises.

## FEATURES

- IQ APP. Intelligent control system for residential ventilation. Connect via internet, radio, Bluetooth or wired to your HERU air handling unit.
- Improved rotor operation through V-belt drive.
- New, more energy-efficient rotor motor.
- Improved ability to reduce weight at installation through simple removal of door, rotary wheel cassette and fan kit.
- Sleeve couplings with fixed rubber seals for easier mounting/removing.
- Greater distance between sleeve coupling connections for easier installation and mounting of silencer.
- Reduced assortment of spare parts due to shared components between the units, such as rotary wheel cassette and fan kit.
- Improved condensation protection of electronics.
- New and uniform design.
- Cable harness with improved cable routing and removable sensors for easier service.
- Labelling of cables for easier installation.
- Common contact for control and power between cable harness and fan kit.
- Simplified service and maintenance.
- Standardized Torx T25 screws for easier service and maintenance.
- Simplified electrical connection for permanent installation.



# IQ CONTROL

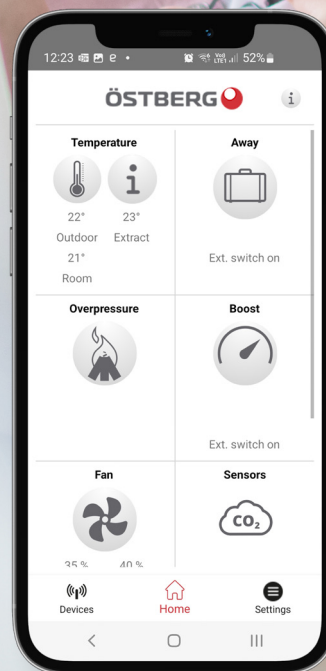
Our intelligent control system for residential ventilation provides a healthy and energy-efficient indoor climate. Connect via internet, radio, Bluetooth or wired to your HERU air handling unit.

## IQC App

**NEWS!** App control that gives end users and installers access to all functions wherever you are. Included as standard upon delivery and replaces IQC Display as standard controller.

### TECHNICAL INFORMATION

- **APP** – Full function app that controls, configures and boots your HERU
- **FUNKTIONALITY** – Same as HERU IQC Display
- **CONNECTION** – Connects via Bluetooth or internet
- **SETUP** – Configuration of HERU
- **HERU SOFTWARE** – Software update in your HERU via notification in your IQC App (Android devices) or via computer (iOS or Android).



## ENERGY RECOVERY UNIT

### HERU 100 S EC



- Controlled by the HERU IQ app via Bluetooth or cloud service (use of Cloud service requires internet connection to the HERU).
- Wireless touch display as accessory.
- Model with side connections.
- Designed for supply and extract air ventilation with energy recovery.
- Suitable for installation in apartments, small houses, offices and other premises where there are stringent requirements on the indoor environment.
- High temperature efficiency, low energy consumption (SFP), low sound level, high operating reliability and provides clean indoor air.
- Unique design minimizes all thermal bridges.
- Integrated Modbus communication. No accessories needed.
- Easy installation wizard.
- Scheduled operation.
- Integrated control for preheater.
- Supports use of presence sensors.
- Airflow is generated by two silent radial fans with EC motors and impellers with backward curved blades.

- The fans are connected using quick connectors and are very easy to remove for cleaning.
- A regenerative, non hygroscopic, aluminum rotating heat exchanger located in the center of the unit. The heat exchanger can easily be removed for cleaning.
- Delivered with bag filter ISO ePM1 65% as standard, for both exhaust and supply air. The filters are very easy to change.
- Integrated controls for heating/cooling. Increases thermal comfort by heat recovery or night cooling.
- Integrated electric heater.
- The unit is made of galvanized steel sheet.
- 50 mm insulation.
- For placement in warm or cold areas.
- Comes in right-hand design as standard, but can easily be rebuilt to left-hand design.
- HERU 100S and HERU 160S are equipped with wall plug. HERU 200S and HERU 300S comes with cable for fixed installation.

NOTE! The warranty of HERU® is only valid if accessories/equipment (e.g. filters) from H. Östberg AB are used.

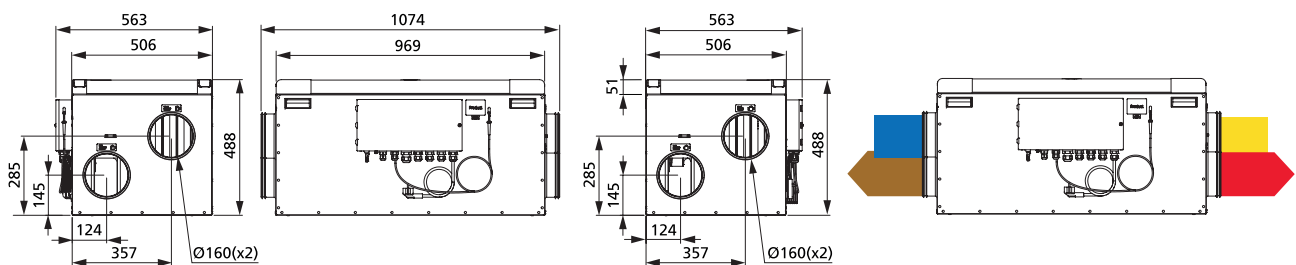
#### ACCESSORIES

- Filter Kit HERU 100 S NextGen
- Outside wall hood 160
- Active dock holder IQC
- Heater Kit Water
- Pressure control IQC
- Damper motor
- Humidity/temperature sensor
- Carbon dioxide sensor CO2
- Room sensor
- Duct sensor
- Extension cable, antenna IQC
- Silencer LDC 160
- Charging Cable for docking station IQC
- IQC Touch display
- IQC Easy

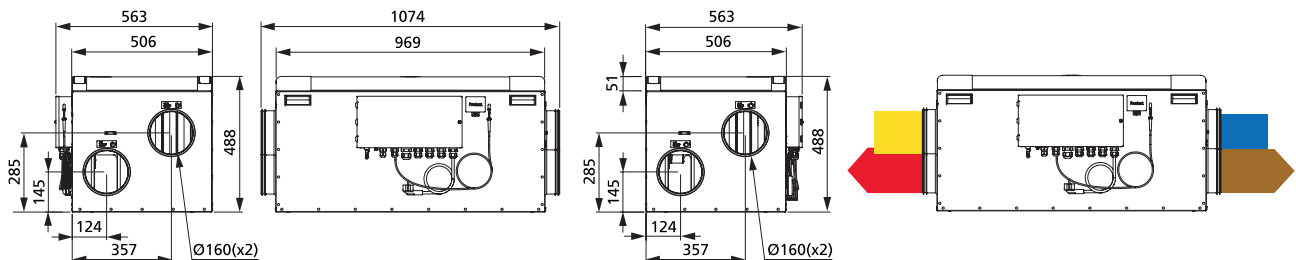


#### DIMENSIONS (mm)

##### RIGHT-HAND DESIGN



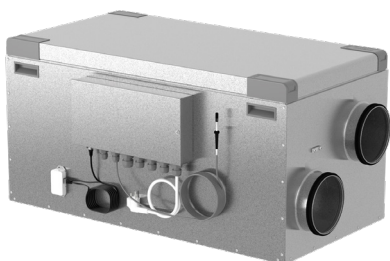
##### LEFT-HAND DESIGN



#### CONNECTIONS

- Supply air
- Extract air
- Exhaust air
- Fresh air





## ENERGY RECOVERY UNIT

### HERU 100 S EC

#### TECHNICAL DATA

HERU 100 S EC-y2		
Voltage	230	V
Frequency	50	Hz
Phase	1	~
Current, 2 fans	1,64	A
Current, electric heater	5,22	A
Total current	7,00	A
Power, 2 fans	200	W
Power, electric heater	1200	W
Total power	1420	W
Speed	3600	rpm
Enclosure class	41	IP
Sound pressure level, 3 m	40	dB L <sub>pA</sub>
Weight	59	kg
Wiring diagram	4040208	

#### SOUND DATA (dB)

	Total (L <sub>WA</sub> )	63 Hz	125 Hz	250 Hz	500 Hz	1k Hz	2k Hz	4k Hz	8k Hz
<b>10 V / 101 l/s</b>									
Surrounding	47	42	41	42	41	33	30	28	29
Supply air	80	60	64	69	77	73	73	68	62
Extract air	66	51	55	60	63	52	47	38	22
<b>9 V / 95 l/s</b>									
Surrounding	46	44	40	41	40	32	29	28	29
Supply air	79	58	62	67	77	69	69	64	55
Extract air	65	53	53	56	63	48	43	34	17
<b>8 V / 82 l/s</b>									
Surrounding	44	37	39	40	38	30	28	27	29
Supply air	76	57	61	69	72	68	68	62	53
Extract air	63	49	53	56	60	47	42	33	16
<b>7 V / 69 l/s</b>									
Surrounding	42	34	37	37	33	28	26	27	29
Supply air	72	56	59	65	66	64	64	58	47
Extract air	59	47	50	56	55	43	38	29	10
<b>6 V / 69 l/s</b>									
Surrounding	40	31	35	36	31	28	26	27	29
Supply air	68	53	56	62	63	60	59	53	40
Extract air	56	43	48	51	51	40	35	25	7
<b>4 V / 32 l/s</b>									
Surrounding	37	26	32	28	26	26	24	26	29
Supply air	58	48	48	52	53	49	47	38	21
Extract air	47	38	41	42	42	30	22	9	3
<b>2 V / 19 l/s</b>									
Surrounding	36	23	32	24	25	25	24	26	29
Supply air	41	31	35	35	35	23	12	5	3
Extract air	50	42	43	41	44	41	35	25	16

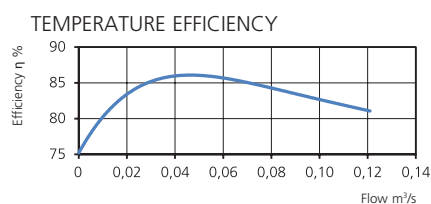
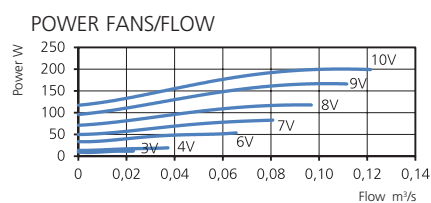
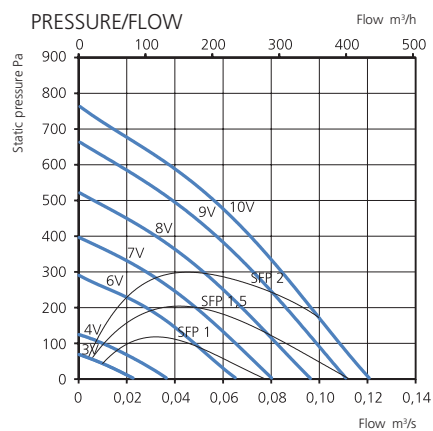
S = Side connection

EC = Fans with low-energy motors

Capacity

y2 = Version2

HERU 100 S EC-y2



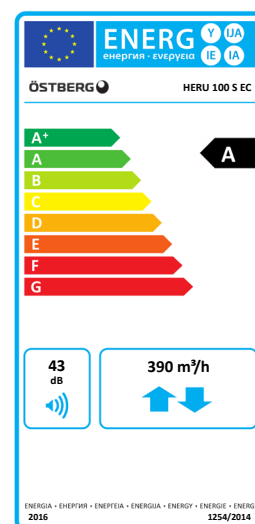
Pressure/airflow diagrams apply for both supply and extract air. Power and SFP apply for both of the fans together.

Type

Art.no.

HERU 100 S EC-y2

8010830



# ENERGY RECOVERY UNIT

## HERU 100 T EC

- Controlled by the HERU IQ app via Bluetooth or cloud service (use of Cloud service requires internet connection to the HERU).
- Wireless touch display as accessory.
- Wall-mounted model with top connection.
- Designed for supply and exhaust air ventilation with energy recovery.
- Suitable for installation in apartments, small houses, offices and other premises where there are stringent requirements on the indoor environment.
- High temperature efficiency, low energy consumption (SFP), low sound level, high operating reliability and provides clean indoor air.
- Unique design minimizes all thermal bridges.
- Integrated Modbus communication. No accessories needed.
- Easy installation wizard.
- Scheduled operation.
- Integrated control for preheater.
- Supports use of presence sensors.
- Airflow is generated by two silent radial fans with EC motors and impellers with backward curved blades.
- The fans are connected using quick connectors and are very easy to remove for cleaning.
- A regenerative, non hygroscopic, aluminum rotating heat exchanger located in the center of the unit. The heat exchanger can easily be removed for cleaning.

- Delivered with bag filter ISO ePM1 50% as standard, for both exhaust and supply air. The filters are very easy to change.
- Integrated controls for heating/cooling. Increases thermal comfort by heat recovery or night cooling.
- Integrated electric heater.
- The interior of the unit is constructed of galvanized steel sheet. The exterior is made of powder coated galvanized steel sheet.
- 50 mm insulation in sides, top, bottom and door. 30 mm insulation in the back of the unit.
- For placement in warm areas, such as laundry, storage or utility rooms.
- Available in either right-hand or left-hand design.
- HERU 100T and HERU 160T has a connection for a cooker hood. This connection is routed past the rotor to prevent cooking odours from spreading back into the premises.
- HERU 100T and HERU 160T are equipped with wall plug.
- Integrated silencer on the supply air and extract air side.

NOTE! The warranty of HERU® is only valid if accessories/equipment (e.g. filters) from H. Östberg AB are used.



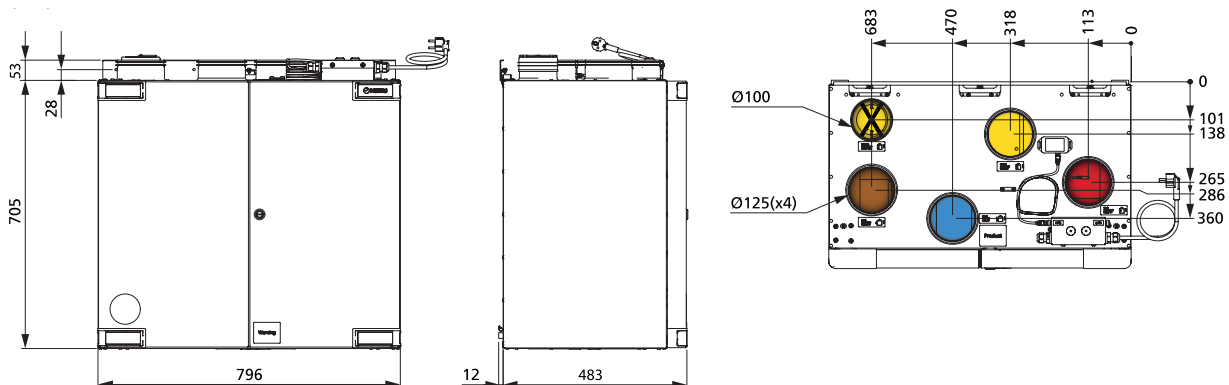
### ACCESSORIES

- Filter Kit HERU 100 T NextGen
- Outside wall hood 125
- Active dock holder IQC
- Heater Kit Water
- Pressure control IQC
- Damper motor
- Humidity/temperature sensor
- Carbon dioxide sensor CO2
- Room sensor
- Duct sensor
- Extension cable, antenna IQC
- Silencer LDC 125
- Cooker hood
- Charging Cable for docking station IQC
- IQC Touch display
- IQC Easy

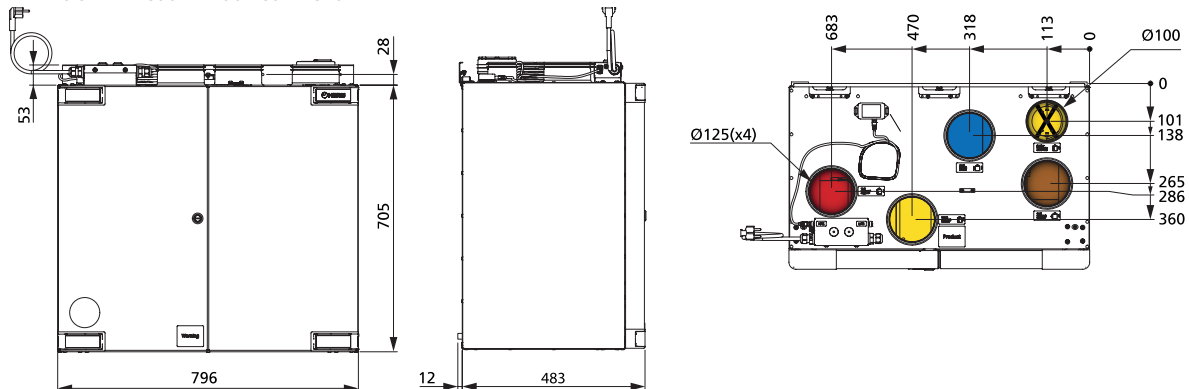


### DIMENSIONS (mm)

#### RIGHT-HAND DESIGN WITH COOKER HOOD CONNECTION



#### LEFT-HAND DESIGN WITH COOKER HOOD CONNECTION



### CONNECTIONS

- Supply air
- Extract air
- Exhaust air
- Fresh air
- Cooker hood





## ENERGY RECOVERY UNIT

### HERU 100 T EC

#### TECHNICAL DATA

HERU 100 T EC-y2		
Voltage	230	V
Frequency	50	Hz
Phase	1	~
Current, 2 fans	1,60	A
Current, electric heater	5,22	A
Total current	6,90	A
Power, 2 fans	198	W
Power, electric heater	1200	W
Total power	1410	W
Speed	3600	rpm
Enclosure class	41	IP
Sound pressure level, 3 m	41	dB L <sub>PA</sub>
Weight	66,0	kg
Wiring diagram	4040210	

#### SOUND DATA (dB)

	Total (L <sub>WA</sub> )	63 Hz	125 Hz	250 Hz	500 Hz	1k Hz	2k Hz	4k Hz	8k Hz
<b>10 V / 99 l/s</b>									
Surrounding	48	42	45	43	40	32	31	29	28
Supply air	73	59	64	68	69	60	63	54	51
Extract air	62	46	52	52	59	55	48	44	31
<b>9 V / 93 l/s</b>									
Surrounding	48	39	44	43	40	31	30	29	28
Supply air	72	56	63	66	69	59	61	53	48
Extract air	61	45	52	49	59	52	46	41	27
<b>8 V / 81 l/s</b>									
Surrounding	45	34	43	40	36	28	29	27	28
Supply air	68	56	62	64	62	55	58	49	43
Extract air	56	44	50	47	50	50	44	39	24
<b>7 V / 70 l/s</b>									
Surrounding	44	36	41	39	31	26	25	26	28
Supply air	66	54	59	62	57	51	54	46	38
Extract air	53	42	49	44	46	47	40	35	19
<b>6 V / 58 l/s</b>									
Surrounding	42	31	40	36	29	24	23	26	28
Supply air	63	51	56	59	55	47	50	41	31
Extract air	51	40	47	41	43	43	37	31	13
<b>4 V / 35 l/s</b>									
Surrounding	40	28	39	29	24	21	21	25	28
Supply air	53	47	48	48	44	36	39	25	13
Extract air	42	34	38	32	35	34	26	16	4
<b>2 V / 10 l/s</b>									
Surrounding	38	23	37	24	22	21	21	25	28
Supply air	37	34	30	29	26	15	12	5	4
Extract air	26	22	20	13	19	14	5	4	3

EC = Fans with low-energy motors

y2 = Version 2

T = Top connection

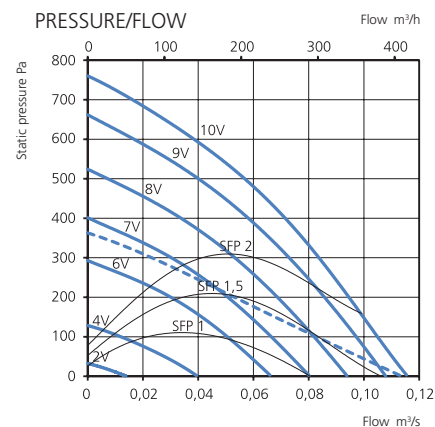
L = Left-hand design  
R = Right-hand design

Capacity

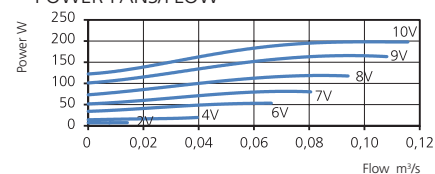
E = Electric heater

HERU 100 T EC-y2 LE

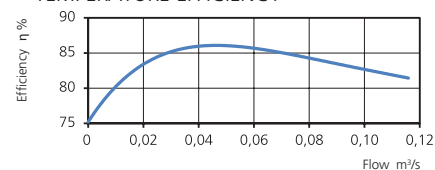
#### PRESSURE/FLOW



#### POWER FANS/FLOW



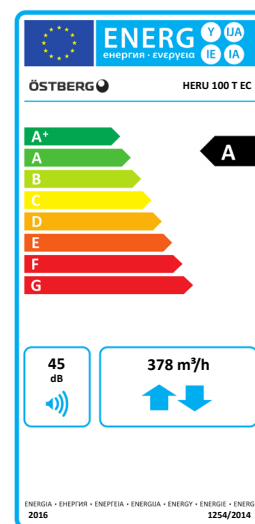
#### TEMPERATURE EFFICIENCY



--- = Cooker hood

Pressure/airflow diagrams apply for both supply and extract air. Power and SFP apply for both of the fans together.

Type	Art.no.
HERU 100 T EC-y2 LE	8010832
HERU 100 T EC-y2 RE	8010831



## ENERGY RECOVERY UNIT

### HERU 160 S EC



- Controlled by the HERU IQ app via Bluetooth or cloud service (use of Cloud service requires internet connection to the HERU).
- Wireless touch display as accessory.
- Model with side connections.
- Designed for supply and extract air ventilation with energy recovery.
- Suitable for installation in apartments, small houses, offices and other premises where there are stringent requirements on the indoor environment.
- High temperature efficiency, low energy consumption (SFP), low sound level, high operating reliability and provides clean indoor air.
- Unique design minimizes all thermal bridges.
- Integrated Modbus communication. No accessories needed.
- Easy installation wizard.
- Scheduled operation.
- Integrated control for preheater.
- Supports use of presence sensors.
- Airflow is generated by two silent radial fans with EC motors and impellers with backward curved blades.

- The fans are connected using quick connectors and are very easy to remove for cleaning.
- A regenerative, non hygroscopic, aluminum rotating heat exchanger located in the center of the unit. The heat exchanger can easily be removed for cleaning.
- Delivered with bag filter ISO ePM1 65% as standard, for both exhaust and supply air. The filters are very easy to change.
- Integrated controls for heating/cooling. Increases thermal comfort by heat recovery or night cooling.
- Integrated electric heater.
- The unit is made of galvanized steel sheet.
- 50 mm insulation.
- For placement in warm or cold areas.
- Comes in right-hand design as standard, but can easily be rebuilt to left-hand design.
- HERU 100S and HERU 160S are equipped with wall plug. HERU 200S and HERU 300S comes with cable for fixed installation

NOTE! The warranty of HERU® is only valid if accessories/equipment (e.g. filters) from H. Östberg AB are used

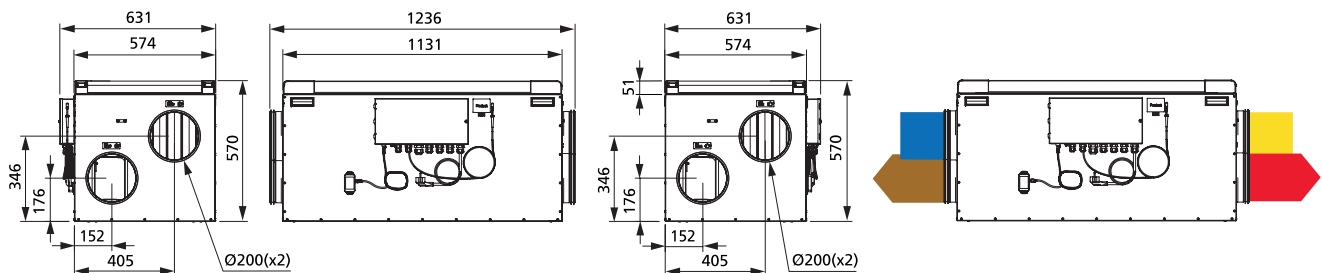
#### ACCESSORIES

- Filter Kit HERU 160 S NextGen
- Outside wall hood 200
- Active dock holder IQC
- Heater Kit Water
- IQC Water Cooler (requires extension board)
- Extension board
- Pressure control IQC
- Damper motor
- Humidity/temperature sensor
- Carbon dioxide sensor CO2
- Room sensor
- Duct sensor
- Extension cable to antenna IQC
- Silencer LDC 200
- Cooker hood
- Charging Cable for docking station IQC
- IQC Display
- IQC Easy

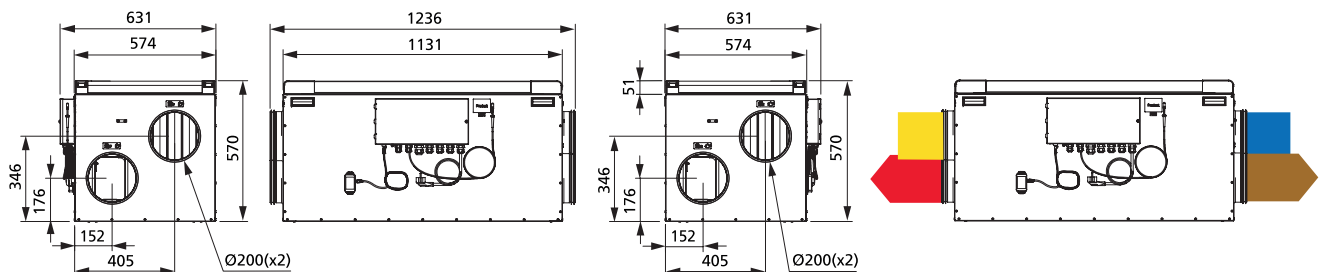


#### DIMENSIONS (mm)

##### RIGHT-HAND DESIGN WITH COOKER HOOD CONNECTION



##### LEFT-HAND DESIGN WITH COOKER HOOD CONNECTION



#### CONNECTIONS

- Supply air
- Extraxt air
- Exhaust air
- Fresh air
- Cooker hood





## ENERGY RECOVERY UNIT

### HERU 160 S EC

#### TECHNICAL DATA

HERU 160 S EC-y2		
Voltage	230	V
Frequency	50	Hz
Phase	1	~
Current, 2 fans	2,44	A
Current, electric heater	7,39	A
Total current	9,90	A
Power, 2 fans	301	W
Power, electric heater	1700	W
Total power	2020	W
Speed	2860	rpm
Enclosure class	41	IP
Sound pressure level, 3 m	41	dB L <sub>PA</sub>
Weight	77,0	kg
Wiring diagram	4040208	

#### SOUND DATA (dB)

	Total (L <sub>WA</sub> )	63 Hz	125 Hz	250 Hz	500 Hz	1k Hz	2k Hz	4k Hz	8k Hz
<b>10 V / 158 l/s</b>									
Surrounding	48	42	44	43	39	33	34	29	27
Supply air	76	59	59	69	71	68	67	63	54
Extract air	66	52	56	62	61	52	45	34	17
<b>9 V / 154 l/s</b>									
Surrounding	47	40	44	42	38	33	34	29	27
Supply air	75	58	59	68	71	67	67	63	54
Extract air	65	50	55	61	61	52	45	34	18
<b>8 V / 140 l/s</b>									
Surrounding	45	38	41	41	33	31	31	27	27
Supply air	72	55	56	66	67	64	63	59	49
Extract air	63	48	53	60	57	50	42	31	15
<b>7 V / 118 l/s</b>									
Surrounding	43	32	38	40	30	29	29	26	26
Supply air	70	52	53	66	65	60	59	54	44
Extract air	61	44	49	59	54	46	39	27	11
<b>6 V / 100 l/s</b>									
Surrounding	42	30	36	39	28	27	26	26	26
Supply air	66	50	50	64	60	56	55	48	39
Extract air	57	41	46	55	50	42	35	24	8
<b>4 V / 54 l/s</b>									
Surrounding	36	22	34	24	25	25	23	25	26
Supply air	53	42	45	46	49	44	42	35	21
Extract air	46	34	40	41	41	32	25	12	4
<b>2 V / 14 l/s</b>									
Surrounding	34	17	30	24	24	25	22	25	26
Supply air	39	32	30	35	34	28	17	10	7
Extract air	32	23	26	29	25	19	4	3	4

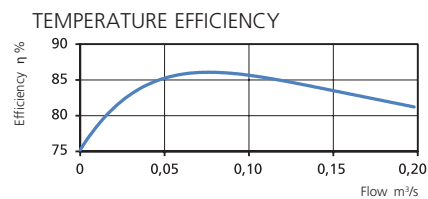
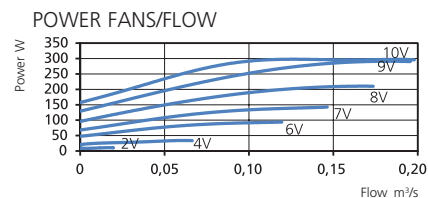
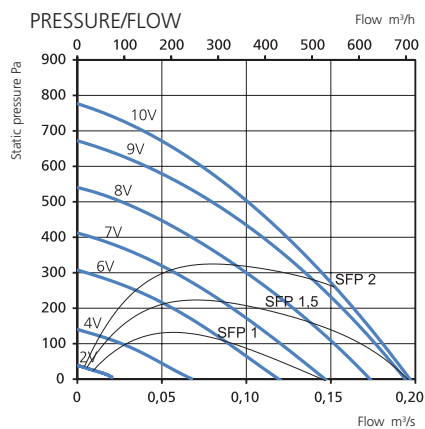
S = Side connection

EC = Fans with low-energy motors

Capacity

y2 = Version2

HERU 160 S EC-y2



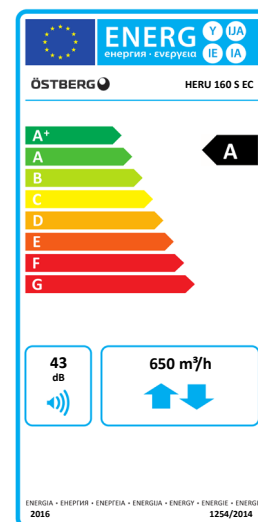
Pressure/airflow diagrams apply for both supply and extract air. Power and SFP apply for both of the fans together.

Type

Art.no.

HERU 160 S EC-y2

8010833



# ENERGY RECOVERY UNIT

## HERU 160 T EC



- Controlled by the HERU IQ app via Bluetooth or cloud service (use of Cloud service requires internet connection to the HERU).
- Wireless touch display as accessory.
- Wall-mounted model with top connection.
- Designed for supply and exhaust air ventilation with energy recovery.
- Suitable for installation in apartments, small houses, offices and other premises where there are stringent requirements on the indoor environment.
- High temperature efficiency, low energy consumption (SFP), low sound level, high operating reliability and provides clean indoor air.
- Unique design minimizes all thermal bridges.
- Integrated Modbus communication. No accessories needed.
- Easy installation wizard.
- Scheduled operation.
- Integrated control for preheater.
- Supports use of presence sensors.
- Airflow is generated by two silent radial fans with EC motors and impellers with backward curved blades.
- The fans are connected using quick connectors and are very easy to remove for cleaning.
- A regenerative, non hygroscopic, aluminum rotating heat exchanger located in the center of the unit. The heat exchanger can easily be removed for cleaning.

- Delivered with bag filter ISO ePM1 50% as standard, for both exhaust and supply air. The filters are very easy to change.
- Integrated controls for heating/cooling. Increases thermal comfort by heat recovery or night cooling.
- Integrated electric heater.
- The interior of the unit is constructed of galvanized steel sheet. The exterior is made of powder coated galvanized steel sheet.
- 50 mm insulation in sides, top, bottom and door. 30 mm insulation in the back of the unit.
- For placement in warm areas, such as laundry, storage or utility rooms.
- Available in either right-hand or left-hand design.
- HERU 100T and HERU 160T has a connection for a cooker hood. This connection is routed past the rotor to prevent cooking odours from spreading back into the premises.
- HERU 100T and HERU 160T are equipped with wall plug.
- Integrated silencer on the supply air and extract air side.

NOTE! The warranty of HERU is only valid if accessories/equipment (e.g. filters) from H. Östberg AB are used.

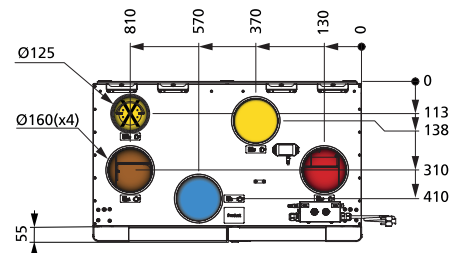
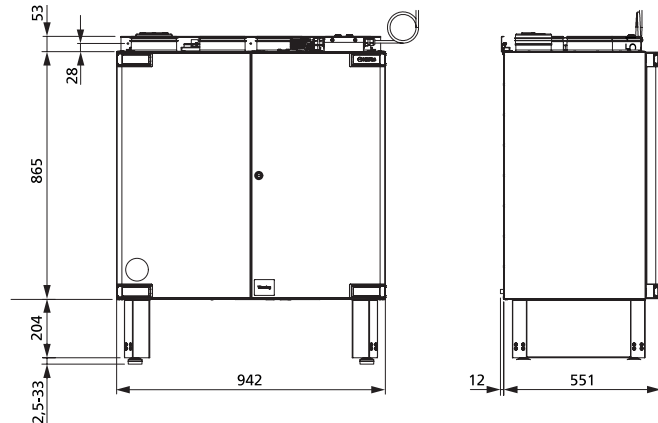
### ACCESSORIES

- Filter Kit HERU 160 T NextGen
- Floor stand HERU 160 T EC NextGen
- Outside wall hood 160
- Active dock holder IQC
- Heater Kit Water
- IQC Water Cooler (requires extension board)
- Extension board
- Pressure control IQC
- Damper motor
- Humidity/temperature sensor
- Carbon dioxide sensor CO2
- Room sensor
- Duct sensor
- Extension cable to antenna IQC
- Silencer LDC 160
- Cooker hood
- Charging Cable for docking station IQC
- IQC Display
- IQC Easy

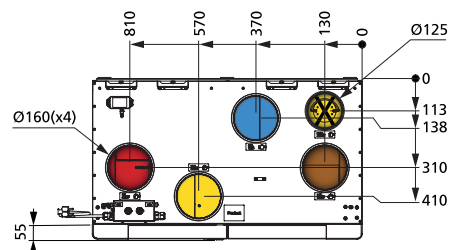
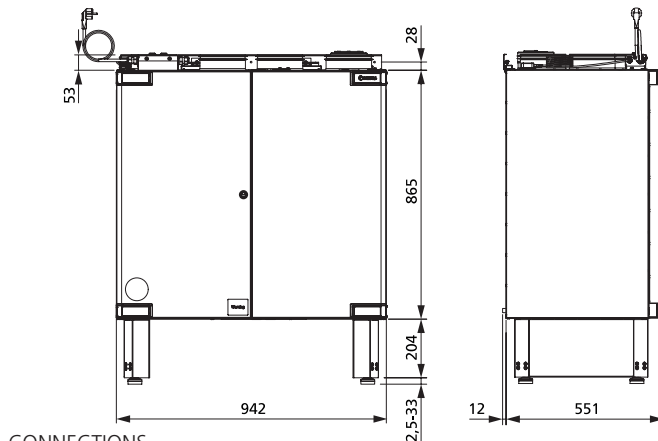


### DIMENSIONS (mm)

RIGHT-HAND DESIGN WITH COOKER HOOD CONNECTION



LEFT-HAND DESIGN WITH COOKER HOOD CONNECTION



### CONNECTIONS

- Supply air
- Extract air
- Exhaust air
- Fresh air
- Cooker hood





## ENERGY RECOVERY UNIT

### HERU 160 T EC

#### TECHNICAL DATA

HERU 160 T EC-y2		
Voltage	230	V
Frequency	50	Hz
Phase	1	~
Current, 2 fans	2,40	A
Current, electric heater	7,39	A
Total current	9,90	A
Power, 2 fans	300	W
Power, electric heater	1700	W
Total power	2020	W
Speed	2860	rpm
Enclosure class	41	IP
Sound pressure level, 3 m	38	dB L <sub>PA</sub>
Weight	95,0	kg
Wiring diagram	4040210	

#### SOUND DATA (dB)

	Total (L <sub>WA</sub> )	63 Hz	125 Hz	250 Hz	500 Hz	1k Hz	2k Hz	4k Hz	8k Hz
<b>10 V / 147 l/s</b>									
Surrounding	45	42	41	42	32	31	30	30	28
Supply air	65	58	55	60	60	51	51	47	40
Extract air	61	52	53	55	54	51	44	39	28
<b>9 V / 147 l/s</b>									
Surrounding	45	42	40	42	32	31	30	30	27
Supply air	65	58	55	60	60	51	51	47	40
Extract air	60	52	52	54	54	51	44	39	28
<b>8 V / 129 l/s</b>									
Surrounding	43	39	37	40	30	29	28	27	26
Supply air	63	54	53	59	57	47	48	44	36
Extract air	57	49	50	50	50	49	40	36	25
<b>7 V / 113 l/s</b>									
Surrounding	41	36	34	38	27	27	26	26	26
Supply air	61	51	50	57	55	44	44	40	30
Extract air	54	46	46	48	47	46	36	33	22
<b>6 V / 93 l/s</b>									
Surrounding	40	33	32	38	25	27	24	25	25
Supply air	57	48	47	55	51	40	40	34	24
Extract air	51	43	43	47	42	41	32	30	17
<b>4 V / 54 l/s</b>									
Surrounding	35	28	30	28	23	24	23	25	25
Supply air	47	42	40	40	40	28	28	18	15
Extract air	40	35	34	27	33	33	25	21	5
<b>2 V / 22 l/s</b>									
Surrounding	33	22	23	27	22	24	23	25	25
Supply air	35	31	26	30	25	12	6	6	5
Extract air	27	23	20	17	20	19	4	3	4

EC = Fans with low-energy motors

y2 = Version2

T = Top connection

L = Left-hand design

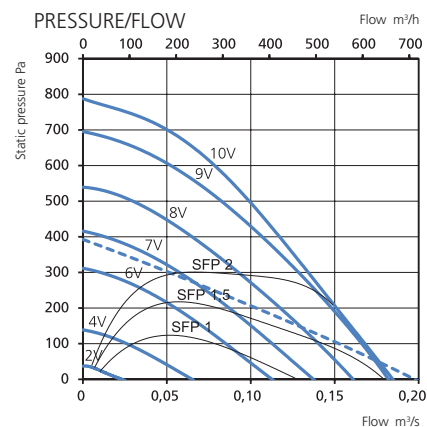
R = Right-hand design

Capacity

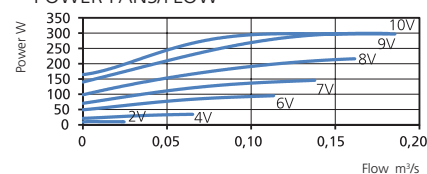
E = Electric heater

HERU 160 T EC-y2 LE

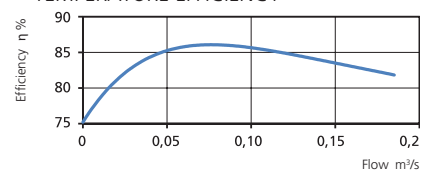
#### PRESSURE/FLOW



#### POWER FANS/FLOW



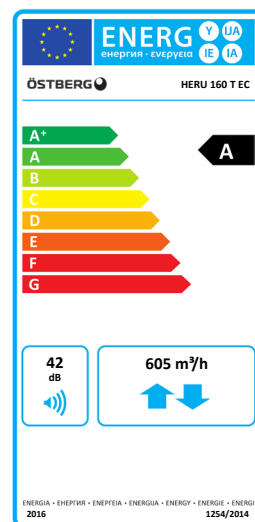
#### TEMPERATURE EFFICIENCY



--- = Cooker hood

Pressure/airflow diagrams apply for both supply and extract air. Power and SFP apply for both of the fans together.

Type	Art.no.
HERU 160 T EC-y2 LE	8010835
HERU 160 T EC-y2 RE	8010834



## ENERGY RECOVERY UNIT

# HERU 200 S EC



- Controlled by the HERU IQ app via Bluetooth or cloud service (use of Cloud service requires internet connection to the HERU).
- Wireless touch display as accessory.
- Model with side connections.
- Designed for supply and extract air ventilation with energy recovery.
- Suitable for installation in apartments, small houses, offices and other premises where there are stringent requirements on the indoor environment.
- High temperature efficiency, low energy consumption (SFP), low sound level, high operating reliability and provides clean indoor air.
- Unique design minimizes all thermal bridges.
- Integrated Modbus communication. No accessories needed.
- Easy installation wizard.
- Scheduled operation.
- Integrated control for preheater.
- Supports use of presence sensors.
- Airflow is generated by two silent radial fans with EC motors and impellers with backward curved blades.

- The fans are connected using quick connectors and are very easy to remove for cleaning.
- A regenerative, non hygroscopic, aluminum rotating heat exchanger located in the center of the unit. The heat exchanger can easily be removed for cleaning.
- Delivered with bag filter ISO ePM1 65% as standard, for both exhaust and supply air. The filters are very easy to change.
- Integrated controls for heating/cooling. Increases thermal comfort by heat recovery or night cooling.
- Integrated electric heater.
- The unit is made of galvanized steel sheet.
- 50 mm insulation.
- For placement in warm or cold areas.
- Comes in right-hand design as standard, but can easily be rebuilt to left-hand design.
- HERU 100S and HERU 160S are equipped with wall plug. HERU 200S and HERU 300S comes with cable for fixed installation.

NOTE! The warranty of HERU is only valid if accessories/equipment (e.g. filters) from H. Östberg AB are used.

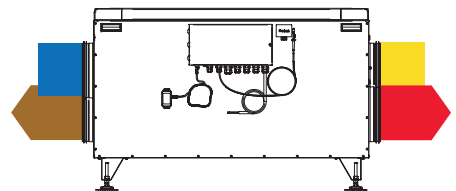
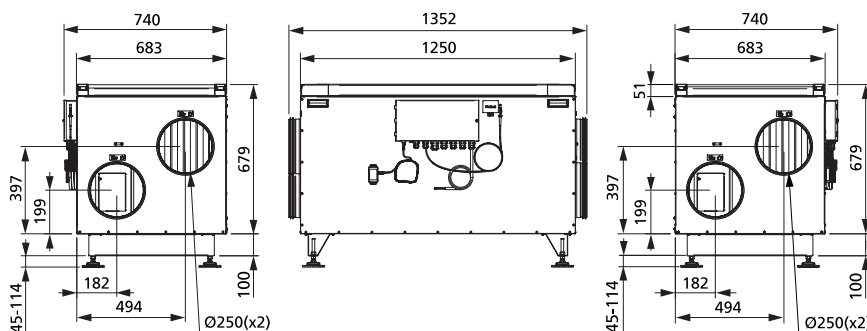
### ACCESSORIES

- Filter Kit HERU 200 S NextGen.
- Floor stand HERU 200 S
- Novibra Mat
- Outside wall hood 250
- Active dock holder IQC
- Heater Kit Water
- IQC Water Cooler (requires extension board)
- Extension board
- Pressure control IQC
- Damper motor
- Humidity/temperature sensor
- Carbon dioxide sensor CO2
- Room sensor
- Duct sensor
- Extension cable to antenna IQC
- Silencer LDC 250
- Charging Cable for docking station IQC
- Mounting base kit HERU 200 S
- IQC Display
- IQC Easy

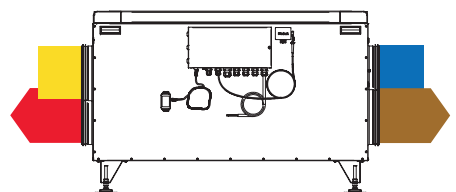
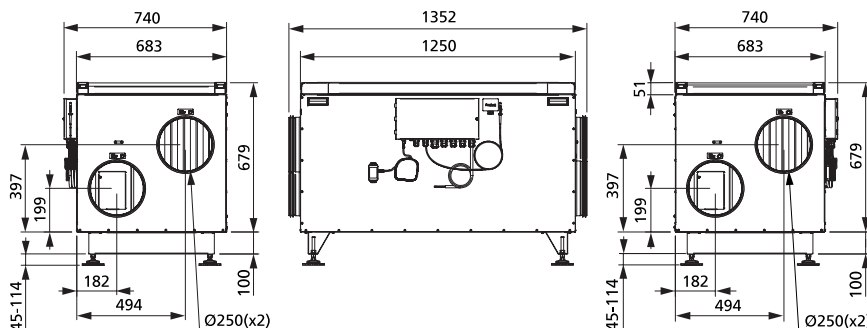


### DIMENSIONS (mm)

#### RIGHT-HAND DESIGN



#### LEFT-HAND DESIGN



### CONNECTIONS

- Supply air
- Extract air
- Exhaust air
- Fresh air





## ENERGY RECOVERY UNIT

### HERU 200 S EC

#### TECHNICAL DATA

HERU 200 S EC-y2		
Voltage	230	V
Frequency	50	Hz
Phase	2	~
Current, 2 fans	2.4	A
Current, electric heater	10.0	A
Total current	12.5	A
Power, 2 fans	303	W
Power, electric heater	2300	W
Total power	2620	W
Speed	2820	rpm
Enclosure class	41	IP
Sound pressure level, 3 m	38	dB L <sub>PA</sub>
Weight	101	kg
Wiring diagram	4040209	

#### SOUND DATA (dB)

	Total (L <sub>WA</sub> )	63 Hz	125 Hz	250 Hz	500 Hz	1k Hz	2k Hz	4k Hz	8k Hz
<b>10 V / 187 l/s</b>									
Surrounding	45	44	40	40	37	34	30	28	27
Supply air	79	58	58	75	72	70	71	65	56
Extract air	67	51	50	65	60	53	47	37	15
<b>9 V / 186 l/s</b>									
Surrounding	44	45	40	39	36	34	30	28	27
Supply air	79	58	58	75	72	70	71	65	56
Extract air	67	51	49	65	59	52	46	36	14
<b>8 V / 164 l/s</b>									
Surrounding	42	39	37	38	32	33	28	28	27
Supply air	77	53	55	74	68	67	68	62	52
Extract air	65	49	47	64	57	51	45	34	13
<b>7 V / 144 l/s</b>									
Surrounding	41	38	34	38	30	31	26	27	27
Supply air	72	50	52	68	65	63	64	58	47
Extract air	60	46	44	58	53	48	42	31	11
<b>6 V / 117 l/s</b>									
Surrounding	39	34	31	36	28	30	26	27	27
Supply air	69	47	49	66	61	59	59	52	40
Extract air	56	42	41	54	48	45	38	26	9
<b>4 V / 69 l/s</b>									
Surrounding	37	26	31	32	26	27	24	27	27
Supply air	56	38	47	52	50	48	47	34	20
Extract air	46	33	41	40	37	37	25	14	9
<b>2 V / 26 l/s</b>									
Surrounding	36	21	22	32	25	26	23	27	27
Supply air	37	28	28	33	32	25	19	15	11
Extract air	31	25	21	25	24	20	13	12	9

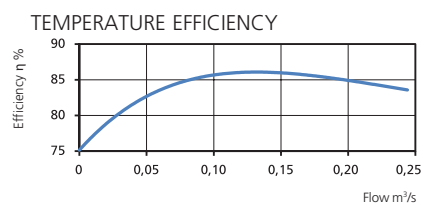
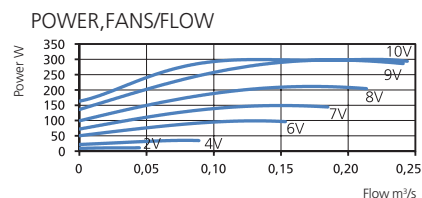
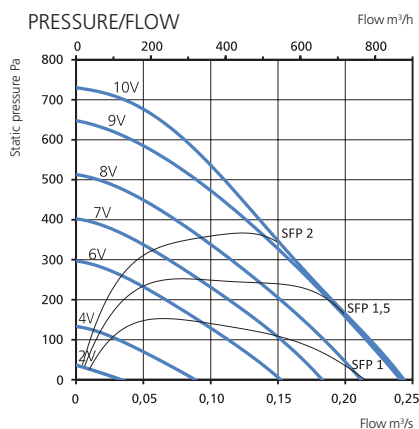
S = Side connection

EC = Fans with low-energy motors

Capacity

y2 = Version 2

HERU 200 S EC y2



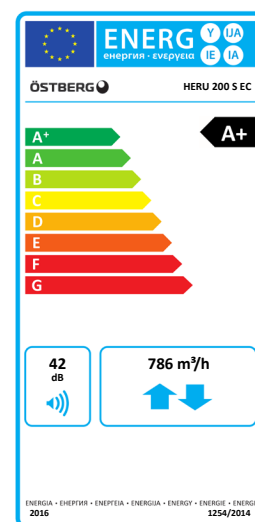
Pressure/airflow diagrams apply for both supply and extract air. Power and SFP apply for both of the fans together.

Type

HERU 200 S EC-y2

Art.no.

8010836



# ENERGY RECOVERY UNIT

## HERU 200 T EC



- Controlled by the HERU IQ app via Bluetooth or cloud service (use of Cloud service requires internet connection to the HERU).
- Wireless touch display as accessory.
- Floor model with top connection.
- Designed for supply and exhaust air ventilation with energy recovery.
- Suitable for installation in apartments, small houses, offices and other premises where there are stringent requirements on the indoor environment.
- High temperature efficiency, low energy consumption (SFP), low sound level, high operating reliability and provides clean indoor air.
- Unique design minimizes all thermal bridges.
- Integrated Modbus communication. No accessories needed.
- Easy installation wizard.
- Scheduled operation.
- Integrated control for preheater.
- Supports use of presence sensors.
- Airflow is generated by two silent radial fans with EC motors and impellers with backward curved blades.
- The fans are connected using quick connectors and are very easy to remove for cleaning.

- A regenerative, non hygroscopic, aluminum rotating heat exchanger located in the center of the unit. The heat exchanger can easily be removed for cleaning.
- Delivered with bag filter ISO ePM1 50% as standard, for both exhaust and supply air. The filters are very easy to change.
- Integrated controls for heating/cooling. Increases thermal comfort by heat recovery or night cooling.
- Integrated electric heater.
- The unit is made of galvanized steel sheet.
- 50 mm insulation in sides, top, bottom and door. 30 mm insulation in the back of the unit.
- For placement in warm areas, such as laundry, storage or utility rooms.
- Available in either right-hand or left-hand design.
- HERU 200T and HERU 300T comes with cable for fixed installation.
- Integrated silencer on the supply air and extract air side.

NOTE! The warranty of HERU is only valid if accessories/equipment (e.g. filters) from H. Östberg AB are used.

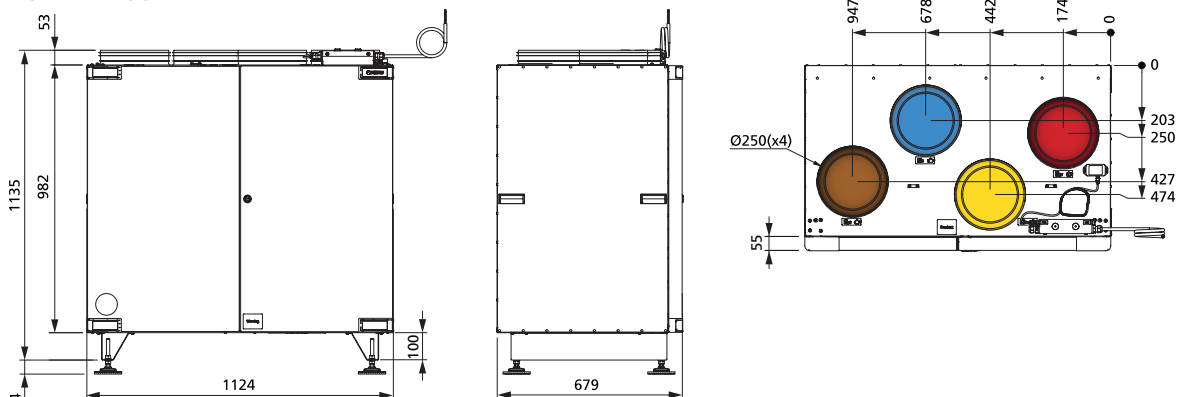
### ACCESSORIES

- Filter Kit HERU 200 T NextGen.
- Novibra Mat
- Outside wall hood 250
- Active dock holder IQC
- Heater Kit Water
- IQC Water Cooler (requires extension board)
- Extension board
- Pressure control IQC
- Damper motor
- Humidity/temperature sensor
- Carbon dioxide sensor CO2
- Room sensor
- Duct sensor
- Extension cable to antenna IQC
- Silencer LDC 250
- Charging Cable for docking station IQC
- IQC Display
- IQC Easy

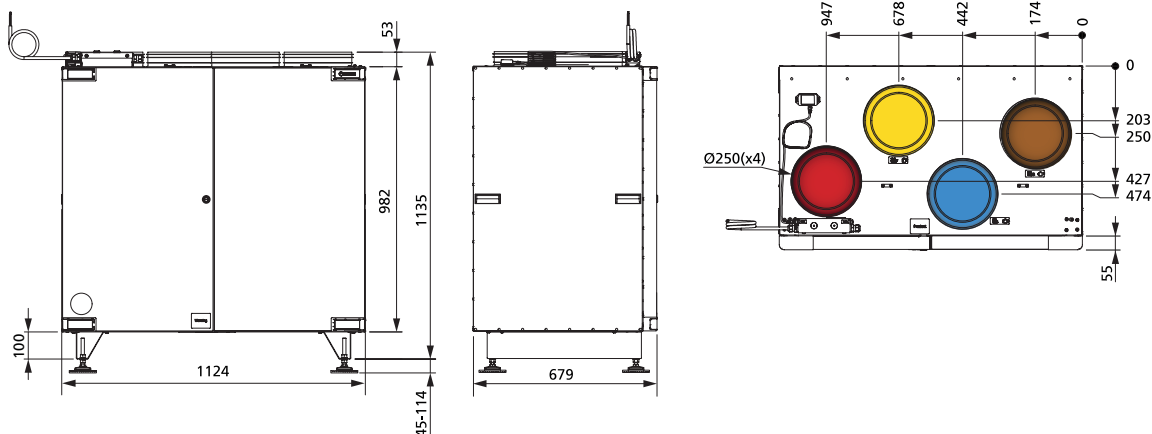


### DIMENSIONS (mm)

#### RIGHT-HAND DESIGN



#### LEFT-HAND DESIGN



### CONNECTIONS

- Supply air
- Extract air
- Exhaust air
- Fresh air



## ENERGY RECOVERY UNIT

### HERU 200 T EC

#### TECHNICAL DATA

HERU 200 T EC-y2		
Voltage	230	V
Frequency	50	Hz
Phase	2	~
Current, 2 fans	2.5	A
Current, electric heater	10.0	A
Total current	12.6	A
Power, 2 fans	303	W
Power, electric heater	2300	W
Total power	2620	W
Speed	2820	rpm
Enclosure class	41	IP
Sound pressure level, 3 m	38	dB L <sub>PA</sub>
Weight	136	kg
Wiring diagram	4040211	

#### SOUND DATA (dB)

	Total (L <sub>WA</sub> )	63 Hz	125 Hz	250 Hz	500 Hz	1k Hz	2k Hz	4k Hz	8k Hz
<b>10 V / 195 l/s</b>									
Surrounding	45	40	36	43	34	30	30	30	29
Supply air	69	58	52	67	56	53	58	53	46
Extract air	56	47	42	54	43	47	47	41	26
<b>9 V / 195 l/s</b>									
Surrounding	44	42	36	42	34	30	30	29	29
Supply air	69	59	52	67	56	53	58	52	46
Extract air	56	46	42	53	43	47	47	41	26
<b>8 V / 173 l/s</b>									
Surrounding	41	34	33	37	34	28	28	29	28
Supply air	67	50	50	66	53	50	55	50	42
Extract air	54	43	40	51	41	45	45	38	23
<b>7 V / 150 l/s</b>									
Surrounding	40	29	31	36	30	28	27	28	28
Supply air	62	47	47	60	51	47	51	46	37
Extract air	53	41	37	51	38	43	42	35	19
<b>6 V / 126 l/s</b>									
Surrounding	39	25	27	37	28	25	26	28	28
Supply air	60	43	44	59	49	42	46	39	28
Extract air	51	36	34	50	35	39	38	30	14
<b>4 V / 77 l/s</b>									
Surrounding	36	22	30	29	27	24	24	28	28
Supply air	46	34	43	40	37	33	33	21	12
Extract air	37	27	30	30	26	32	26	15	9
<b>2 V / 32 l/s</b>									
Surrounding	35	21	23	27	27	23	24	28	28
Supply air	34	26	25	31	23	14	14	11	9
Extract air	26	21	17	20	12	15	12	10	9

EC = Fans with low-energy motors

y2 = Version2

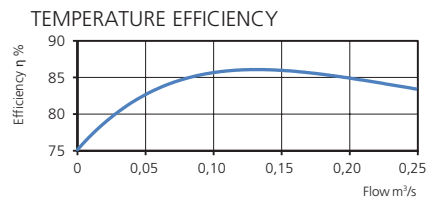
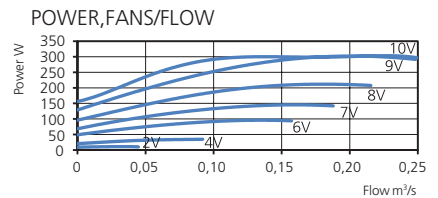
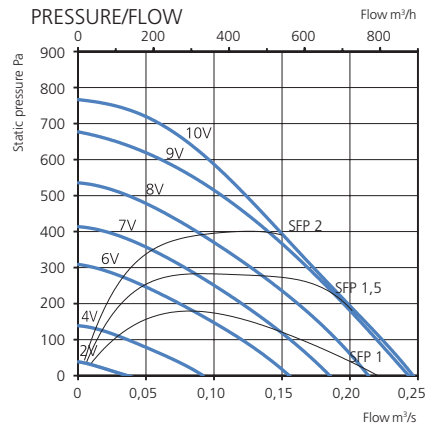
T = Top connection

R = Right-hand design  
L = Left-hand design

Capacity

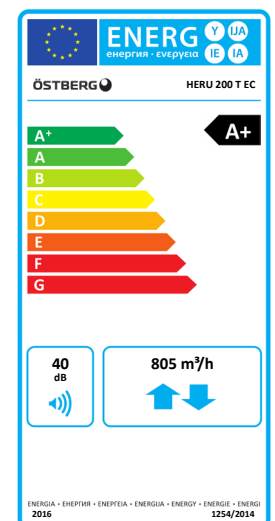
E = Electric heater

HERU 200 T EC-y2 LE



Pressure/airflow diagrams apply for both supply and extract air. Power and SFP apply for both of the fans together.

Type	Art.no.
HERU 200 T EC-y2 LE	8010838
HERU 200 T EC-y2 RE	8010837



## ENERGY RECOVERY UNIT

### HERU 300 S EC



- Controlled by the HERU IQ app via Bluetooth or cloud service (use of Cloud service requires internet connection to the HERU).
- Wireless touch display as accessory.
- Model with side connections.
- Designed for supply and extract air ventilation with energy recovery.
- Suitable for installation in apartments, small houses, offices and other premises where there are stringent requirements on the indoor environment.
- High temperature efficiency, low energy consumption (SFP), low sound level, high operating reliability and provides clean indoor air.
- Unique design minimizes all thermal bridges.
- Integrated Modbus communication. No accessories needed.
- Easy installation wizard.
- Scheduled operation.
- Integrated control for preheater.
- Supports use of presence sensors.
- Airflow is generated by two silent radial fans with EC motors and impellers with backward curved blades.

- The fans are connected using quick connectors and are very easy to remove for cleaning.
- A regenerative, non hygroscopic, aluminum rotating heat exchanger located in the center of the unit. The heat exchanger can easily be removed for cleaning.
- Delivered with bag filter ISO ePM1 65% as standard, for both exhaust and supply air. The filters are very easy to change.
- Integrated controls for heating/cooling. Increases thermal comfort by heat recovery or night cooling.
- Integrated electric heater.
- The unit is made of galvanized steel sheet.
- 50 mm insulation.
- For placement in warm or cold areas.
- Comes in right-hand design as standard, but can easily be rebuilt to left-hand design.
- HERU 100S and HERU 160S are equipped with wall plug. HERU 200S and HERU 300S comes with cable for fixed installation.

NOTE! The warranty of HERU is only valid if accessories/equipment (e.g. filters) from H. Östberg AB are used.

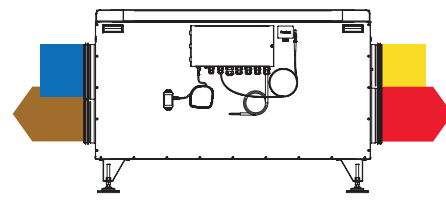
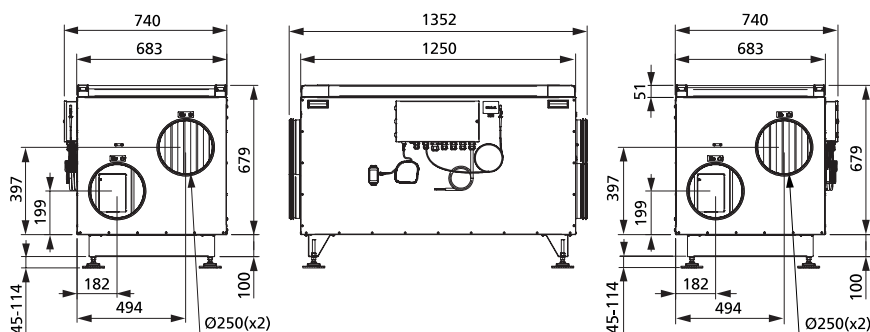
#### ACCESSORIES

- Filter Kit HERU 300 S NextGen
- Floor stand HERU 300 S
- Novibra Mat
- Outside wall hood 250
- Active dock holder IQC
- Heater Kit Water
- IQC Water Cooler (requires extension board)
- Extension board
- Pressure control IQC
- Damper motor
- Carbon dioxide sensor CO2
- Humidity/temperature sensor
- Room sensor
- Duct sensor
- Extension cable to antenna IQC
- Silencer LDC 250
- Charging Cable for docking station IQC
- Mounting base kit HERU 300 S
- IQC Display
- IQC Easy

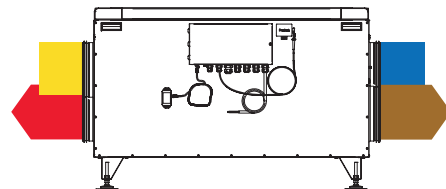
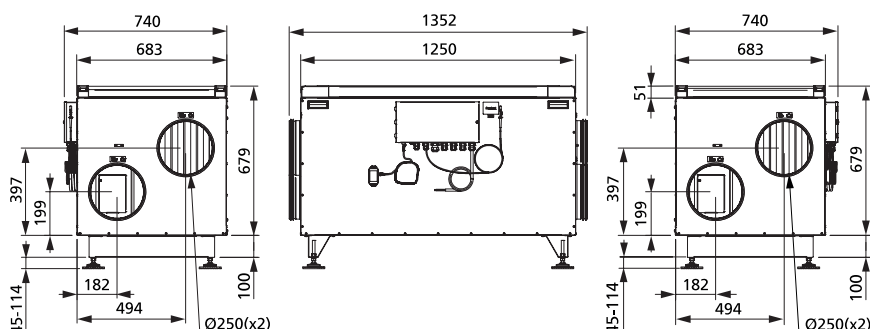


#### DIMENSIONS (mm)

##### RIGHT-HAND DESIGN



##### LEFT-HAND DESIGN



#### CONNECTIONS

- Supply air
- Extract air
- Exhaust air
- Fresh air





## ENERGY RECOVERY UNIT

### HERU 300 S EC

#### TECHNICAL DATA

HERU 300 S EC-y2		
Voltage	230	V
Frequency	50	Hz
Phase	2	~
Current, 2 fans	4.4	A
Current, electric heater	10.0	A
Total current	14.5	A
Power, 2 fans	573	W
Power, electric heater	2300	W
Total power	2890	W
Speed	3020	rpm
Enclosure class	41	IP
Sound pressure level, 3 m	43	dB L <sub>PA</sub>
Weight	105	kg
Wiring diagram	4040209	

#### SOUND DATA (dB)

	Total (L <sub>WA</sub> )	63 Hz	125 Hz	250 Hz	500 Hz	1k Hz	2k Hz	4k Hz	8k Hz
<b>10 V / 264 l/s</b>									
Surrounding	50	55	47	42	42	36	33	31	29
Supply air	86	66	64	69	81	80	79	75	69
Extract air	66	60	56	59	62	54	49	42	23
<b>9 V / 240 l/s</b>									
Surrounding	48	52	45	41	40	35	31	30	28
Supply air	83	59	63	67	79	76	77	72	65
Extract air	62	52	55	57	58	51	47	40	20
<b>8 V / 209 l/s</b>									
Surrounding	45	45	42	38	39	33	29	28	28
Supply air	81	54	59	64	79	72	73	67	61
Extract air	62	49	52	55	59	48	44	36	17
<b>7 V / 180 l/s</b>									
Surrounding	43	42	38	37	36	31	26	28	27
Supply air	76	52	55	63	72	69	69	63	56
Extract air	58	46	49	53	55	45	41	32	13
<b>6 V / 149 l/s</b>									
Surrounding	40	39	36	36	30	28	25	27	27
Supply air	70	49	52	63	64	64	65	58	49
Extract air	56	42	47	53	50	41	37	27	11
<b>4 V / 89 l/s</b>									
Surrounding	37	30	27	34	26	26	23	27	27
Supply air	59	40	43	55	55	51	50	42	32
Extract air	48	36	38	46	38	31	24	15	9
<b>2 V / 26 l/s</b>									
Surrounding	36	24	25	32	25	26	23	27	27
Supply air	40	29	36	34	34	28	25	16	16
Extract air	33	22	29	30	21	11	13	11	9

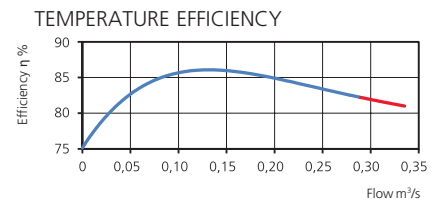
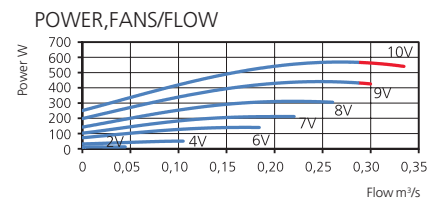
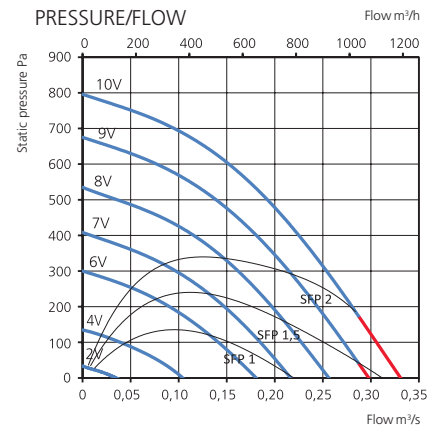
S = Side connection

EC = Fans with low-energy motors

Capacity

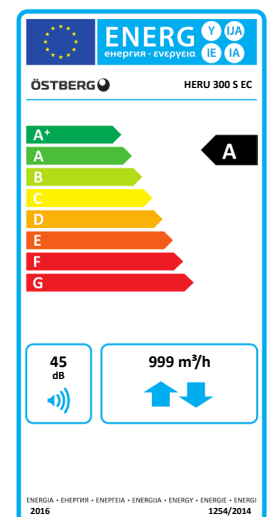
y2 = Version2

HERU 300 S EC-y2



Pressure/airflow diagrams apply for both supply and extract air. Power and SFP apply for both of the fans together.

Type	Art.no.
HERU 300 S EC-y2	8010839



# ENERGY RECOVERY UNIT

## HERU 300 T EC



- Controlled by the HERU IQ app via Bluetooth or cloud service (use of Cloud service requires internet connection to the HERU).
- Wireless touch display as accessory.
- Floor model with top connection.
- Designed for supply and exhaust air ventilation with energy recovery.
- Suitable for installation in apartments, small houses, offices and other premises where there are stringent requirements on the indoor environment.
- High temperature efficiency, low energy consumption (SFP), low sound level, high operating reliability and provides clean indoor air.
- Unique design minimizes all thermal bridges.
- Integrated Modbus communication. No accessories needed.
- Easy installation wizard.
- Scheduled operation.
- Integrated control for preheater.
- Supports use of presence sensors.
- Airflow is generated by two silent radial fans with EC motors and impellers with backward curved blades.
- The fans are connected using quick connectors and are very easy to remove for cleaning.

- A regenerative, non hygroscopic, aluminum rotating heat exchanger located in the center of the unit. The heat exchanger can easily be removed for cleaning.
- Delivered with bag filter ISO ePM1 50% as standard, for both exhaust and supply air. The filters are very easy to change.
- Integrated controls for heating/cooling. Increases thermal comfort by heat recovery or night cooling.
- Integrated electric heater.
- The unit is made of galvanized steel sheet.
- 50 mm insulation in sides, top, bottom and door. 30 mm insulation in the back of the unit.
- For placement in warm areas, such as laundry, storage or utility rooms.
- Available in either right-hand or left-hand design.
- HERU 200T and HERU 300T comes with cable for fixed installation.
- Integrated silencer on the supply air and extract air side.

NOTE! The warranty of HERU is only valid if accessories/equipment (e.g. filters) from H. Östberg AB are used.

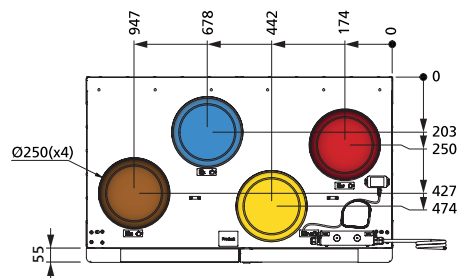
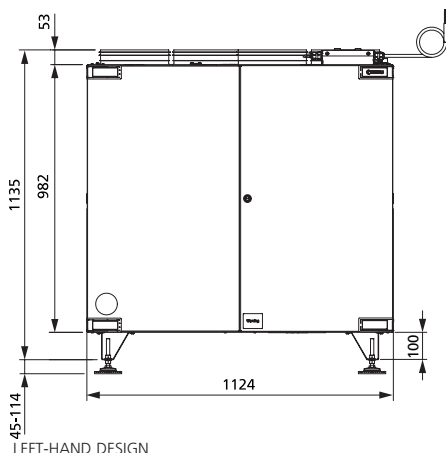
### ACCESSORIES

- Filter Kit HERU 300 T NextGen
- Novibra Mat
- Outside wall hood 250
- Active dock holder IQC
- Heater Kit Water
- IQC Water Cooler (requires extension board)
- Extension board
- Pressure control IQC
- Damper motor
- Carbon dioxide sensor CO2
- Humidity/temperature sensor
- Room sensor
- Duct sensor
- Extension cable to antenna IQC
- Silencer LDC 250
- Charging Cable for docking station IQC
- IQC Display
- IQC Easy

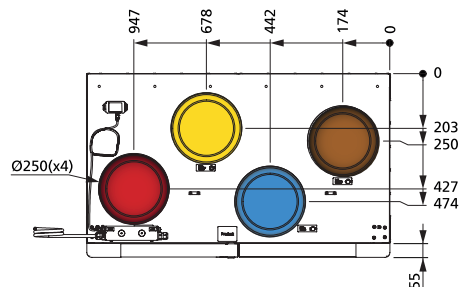
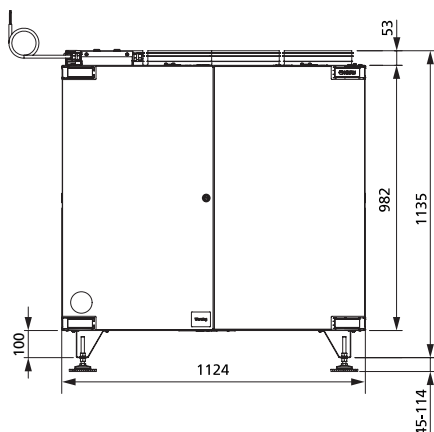


### DIMENSIONS (mm)

#### RIGHT-HAND DESIGN



#### LEFT-HAND DESIGN



### CONNECTIONS

- Supply air
- Extract air
- Exhaust air
- Fresh air

# ENERGY RECOVERY UNIT

## HERU 300 S EC



- Controlled by the HERU IQ app via Bluetooth or cloud service (use of Cloud service requires internet connection to the HERU).
- Wireless touch display as accessory.
- Model with side connections.
- Designed for supply and extract air ventilation with energy recovery.
- Suitable for installation in apartments, small houses, offices and other premises where there are stringent requirements on the indoor environment.
- High temperature efficiency, low energy consumption (SFP), low sound level, high operating reliability and provides clean indoor air.
- Unique design minimizes all thermal bridges.
- Integrated Modbus communication. No accessories needed.
- Easy installation wizard.
- Scheduled operation.
- Integrated control for preheater.
- Supports use of presence sensors.
- Airflow is generated by two silent radial fans with EC motors and impellers with backward curved blades.

- The fans are connected using quick connectors and are very easy to remove for cleaning.
- A regenerative, non hygroscopic, aluminum rotating heat exchanger located in the center of the unit. The heat exchanger can easily be removed for cleaning.
- Delivered with bag filter ISO ePM1 65% as standard, for both exhaust and supply air. The filters are very easy to change.
- Integrated controls for heating/cooling. Increases thermal comfort by heat recovery or night cooling.
- Integrated electric heater.
- The unit is made of galvanized steel sheet.
- 50 mm insulation.
- For placement in warm or cold areas.
- Comes in right-hand design as standard, but can easily be rebuilt to left-hand design.
- HERU 100S and HERU 160S are equipped with wall plug. HERU 200S and HERU 300S comes with cable for fixed installation.

NOTE! The warranty of HERU is only valid if accessories/equipment (e.g. filters) from H. Östberg AB are used.

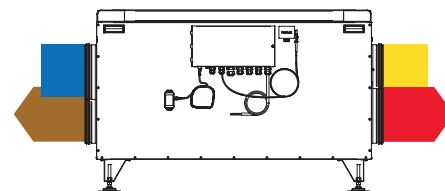
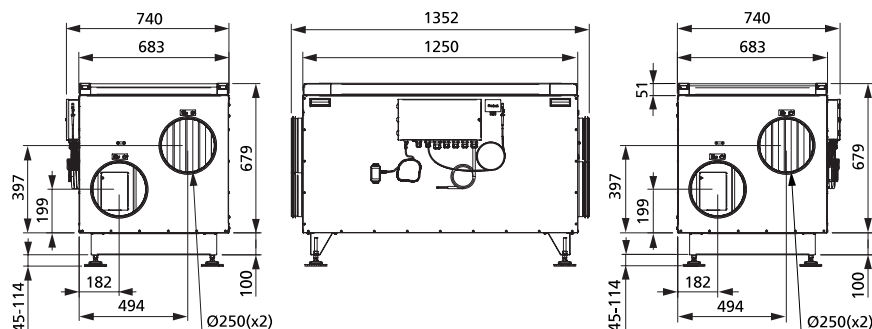
### ACCESSORIES

- Filter Kit HERU 300 S NextGen
- Floor stand HERU 300 S
- Novibra Mat
- Outside wall hood 250
- Active dock holder IQC
- Heater Kit Water
- IQC Water Cooler (requires extension board)
- Extension board
- Pressure control IQC
- Damper motor
- Carbon dioxide sensor CO2
- Humidity/temperature sensor
- Room sensor
- Duct sensor
- Extension cable to antenna IQC
- Silencer LDC 250
- Charging Cable for docking station IQC
- Mounting base kit HERU 300 S
- IQC Display
- IQC Easy

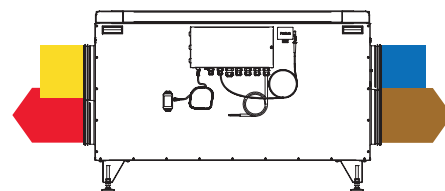
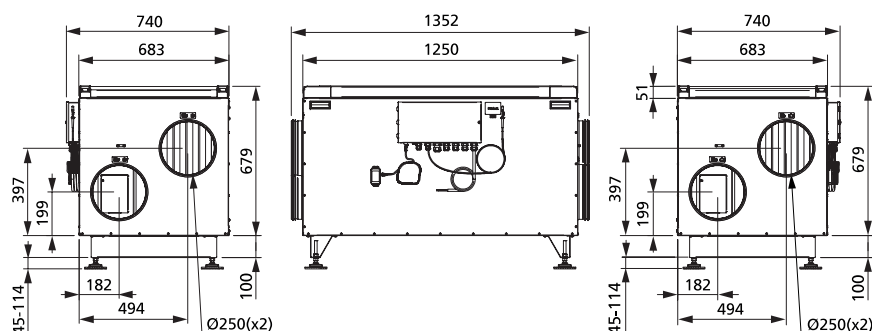


### DIMENSIONS (mm)

#### RIGHT-HAND DESIGN



#### LEFT-HAND DESIGN



### CONNECTIONS

- Supply air
- Extract air
- Exhaust air
- Fresh air

ÖSTBERG supplies the world with energy  
efficient, top-notch ventilation products for  
a fresh and healthy indoor climate  
wherever people live, work or play.



Join Us On Social Media  
[www.ostberg.com](http://www.ostberg.com)

