

Flexit Central Vacuum Cleaner – your choice for a healthier home!



Expels harmful fine dust from
the house.

Norway's best selling!
– new and improved



A healthier home

We spend up to 90% of the time indoors. It is important to give a high priority to improvements and technology that will help create a safe, comfortable and valuable living environment. A central vacuum cleaner vacuums up all the dust and expels the harmful fine dust from the house. Installing a central vacuum cleaner is more than a financial investment. It's an important value choice.

Five good reasons for installing a Flexit central vacuum cleaner

- It makes cleaning easier
- Virtual silent
- It expels harmful fine dust from the house
- Easy to install in new existing homes
- Reasonable one-off investment



What should you focus on when purchasing a central vacuum cleaner?

Effective cleaning and large capacity

A Flexit central vacuum cleaner has good suction power and makes cleaning efficient. Dust container is large and you normally need to change the bag or empty the container only once or twice a year.

Simple to use

With a central vacuum cleaner you no longer have to drag the vacuum cleaner round. Vacuum cleaner hose has long range, and it is usually enough with one outlet on each floor. In addition, vacuuming is quiet. The vacuum placed in a second room, for example in the storage room or basement, and you just hear the sound of the nozzle while you are vacuuming.

Quality

Flexit is the largest supplier of central vacuum in Norway. Flexit focus on quality in all aspects. With over 35 years experience as a supplier to the Norwegian housing, you can feel confident when choosing vacuum from Flexit.

News and improvements

More efficient cleaning with less power consumption

Central vacuum cleaner's motor has been improved in key areas. The motor has been increased cleaning power and thus become even more efficient. In addition, the motor has lower power consumption.

Wireless Communication

The new central vacuum cleaner have wireless two-way communication, ie the information is sent wirelessly both ways between handle and vacuum unit. This provides useful information from the vacuum cleaner. It is therefore not necessary to use low voltage cable to provide signals between the power unit and the handle. In addition, the hoses being lighter and therefore easier to use.

The machines still have connections for low voltage cable so it can be used in existing intallations where the on/off- and standard hoses is in use.

Lower sound

Improvements made central vacuum even quieter. This makes cleaning more pleasant without any unpleasant noise for others.

Practical information display on the handle

Vacuum handle has several new features. An information display on the handle provides useful information such as when the vacuum needs to be emptied. The handle comes in two varieties.

Smart regulation

In addition to the on/off function, you can also adjust the suction power of the vacuum cleaner on the handle. Previously this has been done by opening the "false air". Now, this is done by regulating the speed of motor via a switch on the handle.



Let central vacuum cleaner and ventilation system cooperate

The central vacuum unit can be connected to the air handling unit in your home if you have balanced ventilation from Flexit. This may be relevant in the new dense housing to ensure that the ventilation system provide extra air into the house when the central vacuum cleaner is in use. This will ensure an optimal indoor climate.



Floor outlet (Optional extra)

The outlet can be fitted in a kitchen bench to collect crumbs or in the hallway to collect gravel, etc. The outlet is switch operated. (Low voltage cable must be installed between vacuum unit and floor outlet.)

1. Choose Central Vacuum Cleaner

A Flexit vacuum system is designed to provide maximum cleaning results. Flexit have central vacuum cleaners for all types of homes, and you can choose between four different models. Below you will find product information makes it easier for you to find the right model for your home.



Model that fits majority of homes

Flexit CVR 2000

Art no 04020

Suction: 490 watts *



Extra powerful

Flexit CVR 3000

Art no 04030

Suction: 510 watts *



Model with extra features

Flexit CVR 4000

Art no 04040

With informationsdisplay.

Suction: 510 watts *

- Very quiet
- Easy emptying
- Wireless Communication
- Reduced power consumption
- Lower sound
- Improved cleaning performance



Compact and spacesaving model

Flexit CVR 1000

Art no 04010

Doesn't take up much space.

Suction: 460 watts *

* Not to be confused with motor wattage

Technical data	CVR 1000	CVR 2000	CVR 3000	CVR 4000
Height	427 mm	800 mm	800 mm	800 mm
Width with handle	360 mm	370 mm	370 mm	370 mm
Depth with bracket	400 mm	400 mm	400 mm	400 mm
Motor (Through Flow motor)	1300 W	1550 W	1700 W	1700 W
Fuse	10 A	10 A	10A	10A
Weight	5 kg	6,5 kg	6,5 kg	6,5 kg
Noise from unit	66 dB	66 dB	66 dB	66 dB
Capacity, dust container	-	25 liter	25 liter	25 liter
Capacity using bag	10 liter	14 liter	14 liter	14 liter
Max suction motor	650 Airwatt	720 Airwatt	735 Airwatt	735 Airwatt
Max suction (measured at the suction unit)	460 W	490 W	510 W	510 W
Max air flo (measured at the suction unit)	50 l/s	53 l/s	54 l/s	54 l/s
Max vacuum (measured at the suction unit)	21 kPa	30 kPa	30 kPa	30 kPa
Radio remote control	50 meter	50 meter	50 meter	50 meter
Informationsdisplay	No	No	No	Yes

2. Choose **Accessory kit**

Effective and convenient cleaning

The accessory kit with the hose and nozzles are what you need for the cleaning to be effective and for you to get a good end result. The hoses are light to make vacuuming as easy and comfortable as possible. The handles have an ergonomic design that provides a good grip. In addition, the cleaning effect is further enhanced by the hose has been reduced internal resistance. One advantage is that the hose can be lengthened or shortened, for example, if you build on, and need more range or you think the hose is unnecessarily long.

Pck. 1

- **Hoose with LCD informations-
display, 12 m**
- **Info center display**
 - Speed level
 - Check bag filter/container
 - The power regulation can be adjusted in 5 steps
- **Art no 04003**



Pck. 2

- **Hoose with LEDs on handle**
 - The lamp is activated when the power regulation is adjusted.
 - The lamp flashes a warning light that indicates that the bag filter is clogged or that the container/dust bag is full
 - The power regulation can be adjusted in 5 steps
- **Art no 04001 (9m)**
- **Art no 04002 (12m)**



Both the kits contain complete suction nozzles for both floors and carpets



The nozzle is equally suitable for hard floors and carpets.



This floor nozzle is particularly suitable for hard floors.



Curtain and Furniture nozzle



Dust brush



Radiator and Groove nozzle



Telescopic tube



Hose holder

3. Choose Pipe kit

The following alternative pipe kits are available:

- A. Pipe kit for existing homes
- B. Pipe kit with three sockets and 17.25 m of pipe
- C. Pipe kit with two sockets and 10.35 m of pipe
- D. Pipe kit with one socket and 6.9 m of pipe (extension kit)

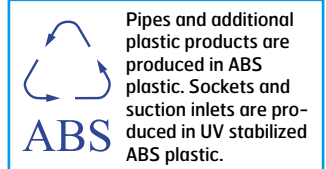
	A	B	C	D
Vacuum sockets	3 pcs	3 pcs	2 pcs	1 pcs
Mounting plate	3 pcs	3 pcs	2 pcs	1 pcs
Short bend 90°	6 pcs	3 pcs	2 pcs	1 pcs
Pipes, à 1,15m long	15 pcs	15 pcs	9 pcs	5 pcs
Bend 90°	8 pcs	11 pcs	5 pcs	4 pcs
Bend 45°	6 pcs	6 pcs	2 pcs	2 pcs
Pipe clamps	12 pcs	7 pcs	6 pcs	3 pcs
Fixing sleeves	12 pcs	12 pcs	5 pcs	4 pcs
Y-branch 90°	2 pcs	2 pcs	1 pcs	1 pcs
Low-voltage cable	25 m	25 m	15 m	10 m
Strips for low-voltage cable	30 pcs	30 pcs	20 pcs	10 pcs
Exhaust valve	1 pcs	1 pcs	1 pcs	
Sound absorber for exhaust valve	1 pcs	1 pcs	1 pcs	
Adapter for retrofitting	3 pcs	3 pcs	2 pcs	
ABS Cement Adhesive 118 ml.	1 pcs	1 pcs	1 pcs	
Cover ring	4 pcs			
Intake extension	3 pcs			
Flexible pipe, 2 m long	2 pcs			
Pipe cutter	1 pc			
Hole saw 57 mm	1 pc			
Hole saw 64 mm	1 pc			
Drill Ø6 mm, length 400 mm	1 pc			



The picture shows a simplified installation for a Flexit central vacuum cleaner with two sockets and an exhaust pipe.

Optional extras:

- Longer/shorter hose
- Additional silencers
- Floor outlet
- Brass socket
- Any additional pipe parts can be obtained from your dealer.



Pipes and additional plastic products are produced in ABS plastic. Sockets and suction inlets are produced in UV stabilized ABS plastic.

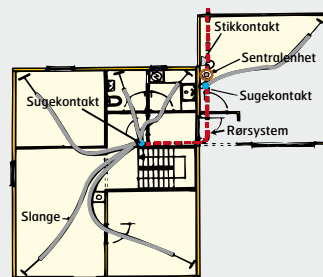
Easy to install in both new and existing homes

Fig. 1
Positioning the vacuum unit



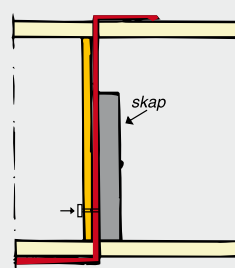
Basements, utility rooms, garages and rooms that aren't used very much, for example, are suitable places to install the vacuum unit.

Fig. 2
Positioning the sockets



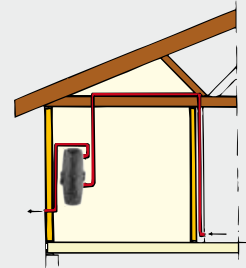
Remember to position the sockets in such a way they cover as large an area as possible. Each socket should normally cover a radius of 10 metres (including telescopic tube and nozzle). This usually covers the whole floor.

Fig. 3
Vertical piping



Cupboards or wardrobes are generally ideal for vertical piping. The socket can be connected in an adjoining room.

Fig. 4
Piping in the attic



A cold loft or lumber room can be used for the horizontal pipe to where the socket is to be installed. The sockets can be installed in the wall or floor, whichever is more convenient. NB: The vacuum unit should be located on the same floor as the lowest socket.

Important advice and tips before starting installation

1. Check that you have chosen the right model

Flexit central vacuum cleaners come in four different models. Choose a model with the right suction for your needs. If you require advice and guidance, our dealers will help you.

2. Choose the right location for the vacuum unit

We recommend installation in a utility room, basement, garage or a room that isn't used much.

- The Flexit CVR 1000 can be installed in a kitchen cupboard, wardrobe, etc. This requires a separate installation kit for cupboards. It can also be installed in a utility room, basement, etc.
- The Flexit CVR 2000, Flexit CVR 3000 and Flexit CVR 4000 are normally installed in a utility room, basement, etc.
- The Flexit CVR 3000 and Flexit CVR 4000 are recommended if a long hose is to be used or the vacuum unit is to be installed upstairs.

General considerations:

- position the vacuum unit as low as possible
- position the vacuum unit near an outside wall
- the exhaust pipe should be as short as possible
- do not position the exhaust valve by an entrance door, window, etc.

3. Positioning the sockets

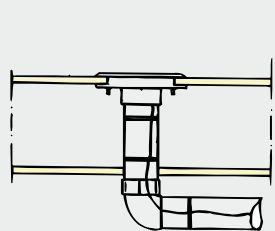
Remember to position the sockets in such a way that the hose will cover as large an area as possible. Each socket should normally cover a radius of 10 metres (including telescopic tube and nozzle). This usually covers the whole floor. We recommend using a piece of string measuring 10 metres in length to establish how far the hose will reach from where you want to locate the socket. If you want a shorter hose, you can install more sockets. Remember to allow for furniture, cupboards, beds, etc. It is important to plan the work.

NB: Remember to check whether there is any wiring, etc., where you plan to run the pipes.

4. Hoses are available as standard up to 12 meters. In addition, hoses can be spliced. Please note that extra long hoses can reduce the suction power, and it may be an option that installs multiple sockets rather than using extra long hose.

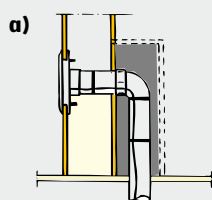
Simplified illustration of how the individual parts should be installed:

Fig. 5
Floor mounting

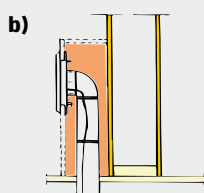


The socket can be installed in the floor or wall, whichever is more convenient.

Fig. 6
Wall mounting

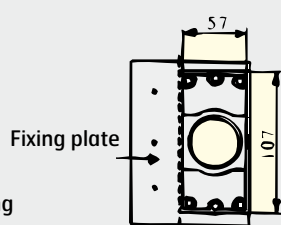


In the case of wall mounting the vertical pipe can be boxed in or concealed in an existing cupboard.



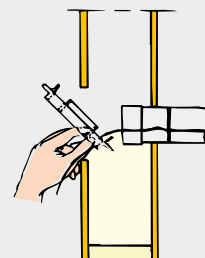
The pipe can also be installed as shown here. In this case the socket is also fitted in the boxing.

Fig. 7
Installation in existing walls and floors

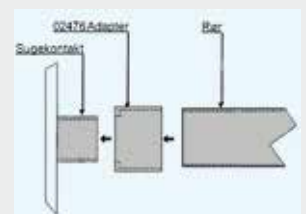


Where sockets are to be installed in existing walls and floors, remove the fixing plate beside the mounting plate. Cut the fixing plate off with a hacksaw or score and brake off the flange.

Fig. 8
Securing the socket



Pull the mounting plate into the hole and hold in place while the pipe is fed through the wall/floor. The pipe holds the mounting plate in place while the socket is secured. NB: Remember to run the low-voltage cable on the outside of the pipe and glue the pipes together.



To retrofit a socket without using a mounting plate, use an adapter type 02476 directly on the socket stub. The adapter will then fit straight onto a pipe. Do not glue the socket to the adapter. This solution can be used in floors or where the wall boards are too thick for the mounting plate to be used.



Specialists in clean and fresh air

Flexit supplies and clean air solutions for a healthy indoor environment. Flexit is the market leader in central vacuum cleaners and home ventilation and providing clean and fresh air to homes in Norway since 1974. Flexit is a Norwegian company and all products are designed and tested specifically for Nordic climate.

It provides safety for you!

Our products are subject to continuous development and we therefore reserve the right to make changes. We also disclaim liability for any printing errors that may occur.