

# Flexit S12 X

Art.no.	Type
14535	S12 XER 400V
14536	S12 XEL 400V
14537	S12 XWR
14538	S12 XWL



CI 500 Control Panel included in all units.

	S12 XW	S12 XE
Rated voltage:	230 V	400 V
Fuse:	1 x 10 A	3 x 16 A
Rated current, total:	6 A	14 A
Rated power, total:	1 100 W	7 100 W
Rated power, electric battery:		6 000 W
Rated power, fans:	2 x 485 W	2 x 485 W
Rated power, preheating:		
Fan type:	B-wheel	B-wheel
Fan motor control:	EC-control system	EC-control system
Max. fan speed:	3 580 rpm	3 580 rpm
Filter type (SUP/EXTR):	F 7	F 7
Filter dimension (W x H x D):	2 x (592 x 294 x 250 mm)	2 x (592 x 294 x 250 mm)
Numbers of bags:	12	12
Weight:	185 kg	185 kg
Duct connection:	Ø 250 mm	Ø 250 mm
Height:	1 380 mm	1 380 mm
Width:	1 250 mm	1 250 mm
Depth:	700 mm	700 mm

# Flexit S12 X

## Accessories



**Bag Filter**

Art.no.	Type
12324	F7



**Closing Air Damper w/  
Spring Return**

Art.no.	Type
14485	Ø250 w/Spring Return
14476	Ø250 on/off



**3-way Valve**

Art.no.	Type
56232	KVS 1.6 3-way
56432	KVS 1,6 2-way
57228	KVS 2,5 3-way
56433	KVS 2,5 2-way
56072	fittings KVS 2,5



**Motor 3-way Valve**

Art.no.	Type
56234	0-10V



**SP440 CO<sub>2</sub>**

Art.no.
09359



**SP 435 Motion Detector**

Art.no.
09358



**SP 450 Motion Detector**

Art.no.
09390



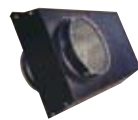
**CC 1050 Pressure Sensor**

Art.no.
09367



**SP 445 Smoke Detector**

Art.no.
09362



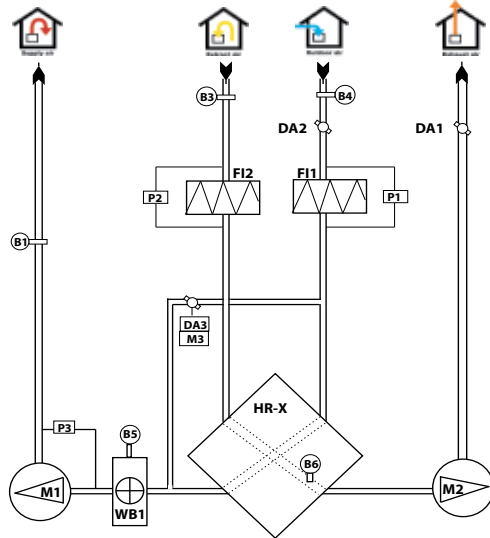
**Combi. Unit**

Art.no.	Type
14328	2xØ250mm, black
14331	2xØ315mm, black

# Flexit S12 X

## S12 XWR

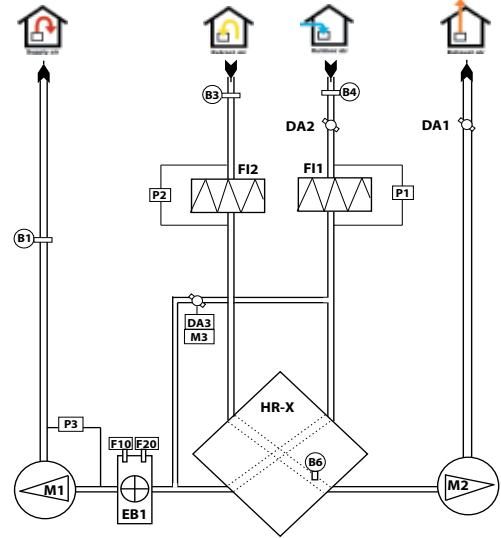
### System drawing, water-based heating



- |      |  |     |   |
|------|--|-----|---|
| M1   | Supply air fan                                 | B5  | Temperature sensor, water battery (frost relay) |
| M2   | Extract air fan                                | B6  | Temperature sensor, thermoguard                 |
| M3   | Air damper motor, exchanger                    | DA1 | Air damper, exhaust air (not standard)          |
| F1   | Supply air filter                              | DA2 | Air damper, outdoor air (not standard)          |
| F2   | Extract air filter                             | DA3 | Air damper, heat exchanger                      |
| HR-X | Cross heat exchanger                           | WB1 | Water Battery                                   |
| P1   | Pressure guard, supply air filter              |     |   |
| P2   | Pressure guard, extract air filter             |     |   |
| B1   | Temperature sensor, supply air (not standard)  |     |   |
| B3   | Temperature sensor, extract air (not standard) |     |   |
| B4   | Temperature sensor, outdoor air (not standard) |     |   |

## S12 XER

### System drawing, electric heating

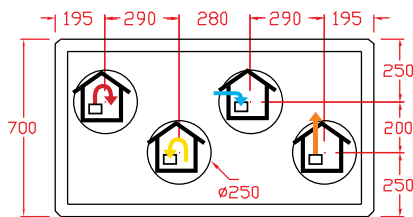
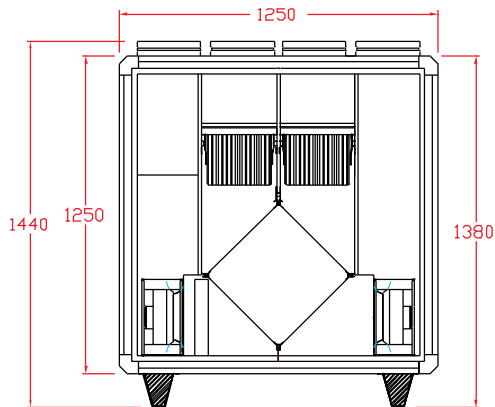


- |      |                                      |     |  |
|------|--------------------------------------|-----|--|
| M1   | Supply air fan                       | B3  | Temperature sensor, extract air (not standard) |
| M2   | Extract air fan                      | B4  | Temperature sensor, outdoor air (not standard) |
| M3   | Air damper motor, exchanger          | B6  | Temperature sensor thermoguard                 |
| F1   | Supply air filter                    | DA1 | Air damper, exhaust air (not standard)         |
| F2   | Extract air filter                   | DA2 | Air damper, outdoor air (not standard)         |
| HR-X | Cross heat exchanger                 | DA3 | Air damper, heat exchanger                     |
| F10  | Overheating thermostat, manual reset | EB1 | Electric Battery                               |
| F20  | Overheating thermostat               |     |  |
| P1   | Pressure guard, supply air filter    |     |  |
| P2   | Pressure guard, extract air filter   |     |  |
| P3   | Pressure relay, supply air fan       |     |  |
| B1   | Temperature sensor, supply air       |     |  |

## Dimensioned drawing

Dimensions in mm

### - cross heat exchanger model, right

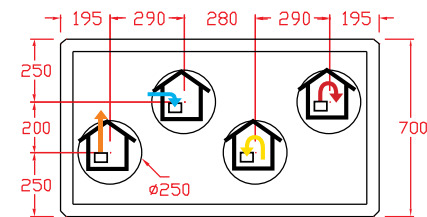
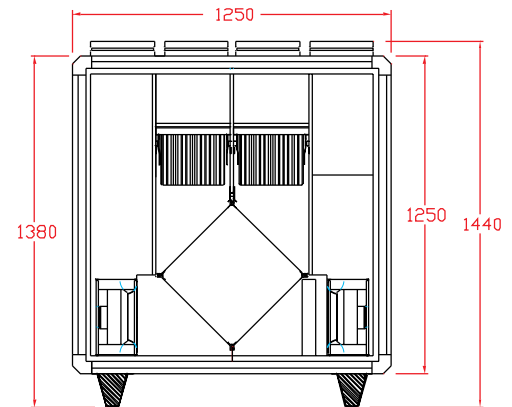


Front

## Dimensioned drawing

Dimensions in mm

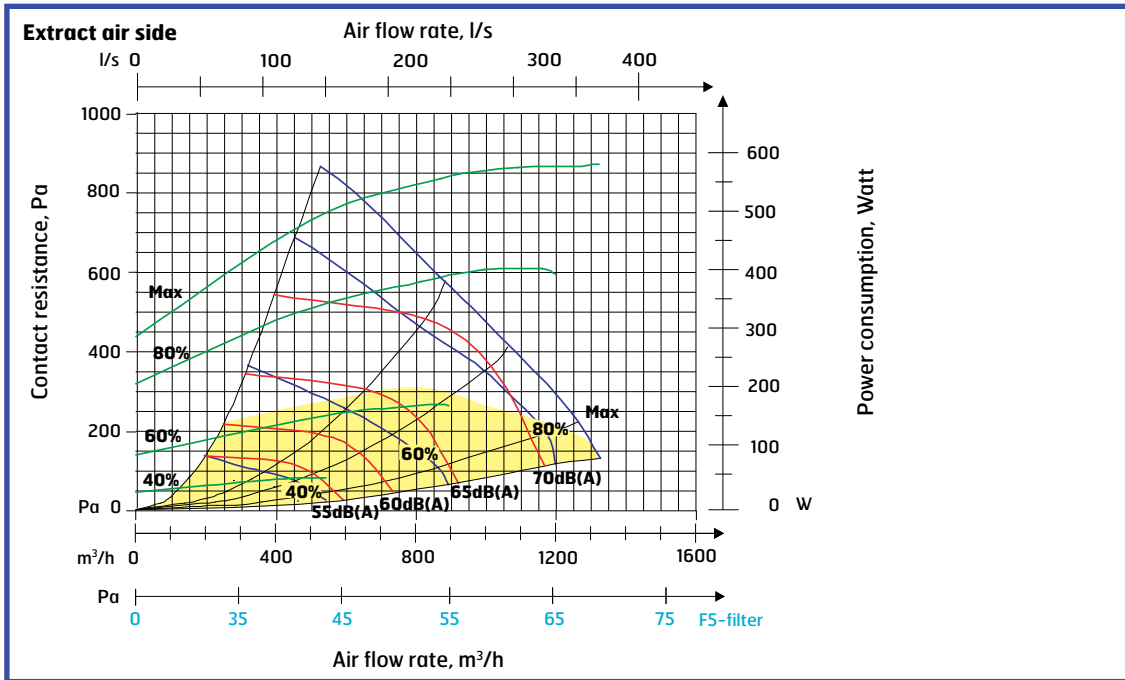
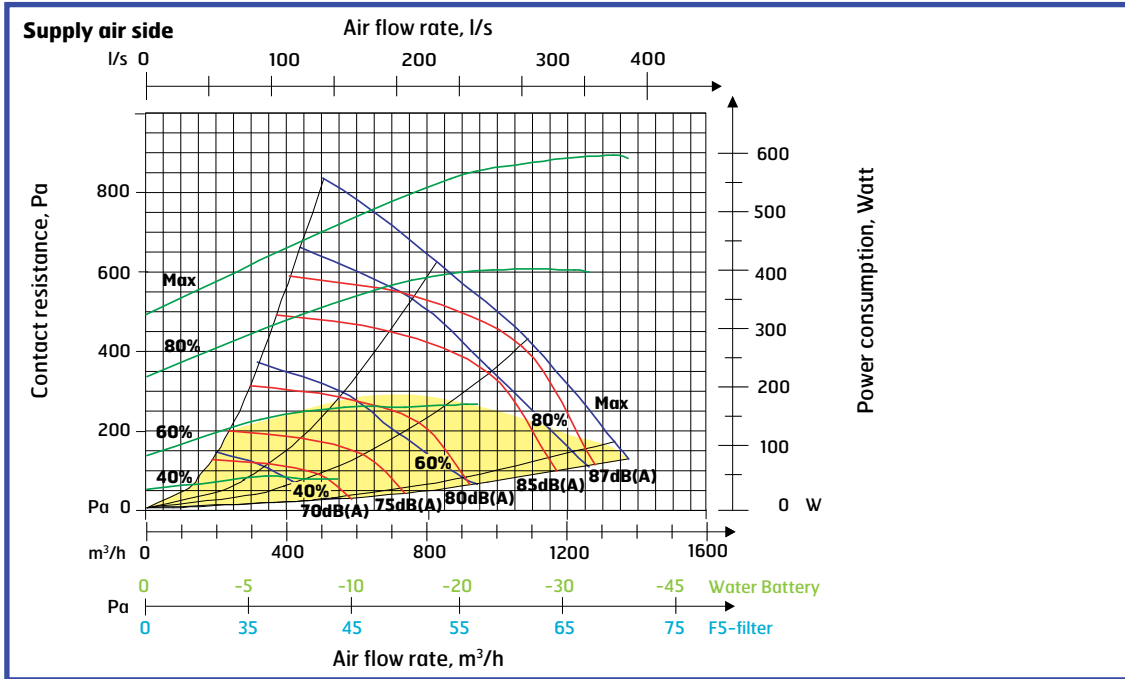
### - cross heat exchanger model, left



Front

# Flexit S12 X

## Capacity Diagram S12 X EC W/E (measured with F7 filter)



Yellow field: SFP < 1.25 per fan

$$SFP = \frac{P}{V} \text{ [kW/m}^3\text{/s]} = \text{J/m}^3$$

**Sound data** is given at sound power level LwA in the capacity diagrams and is corrected with the table below for the various octave bands and is corrected with the table below for the various octave bands and total LwA. Radiated noise is calculated by taking the noise value from the supply air table and deducting the total value from the correction factor table.

Supply air data is measured in accordance with ISO 5136, the in-duct method. Radiated noise is measured in accordance with ISO 9614-2. Bruel & Kjaer measuring equipment, type 2260.

Correction factor for Lw									
Hz	63	125	250	500	1000	2000	4000	8000	Total LwA
Supply air	-3	-2	-1	0	-8	-10	-16	-30	
Extract air	11	6	-1	0	-8	-15	-27	-40	
Radiated	-40	-41	-37	-45	-43	-42	-45	-54	<b>-36,6</b>

**Blue curves:** Air capacity at various capacity settings in Volt.

**Green curves:** Supply air fan power consumption at various capacity settings.

**Red curves:** Sound power level LwA, cf. correction table.

**Light blue correction axe:** Pressure increase using an EU-5 filter.

**Light green correction axe:** Pressure increase using water battery.