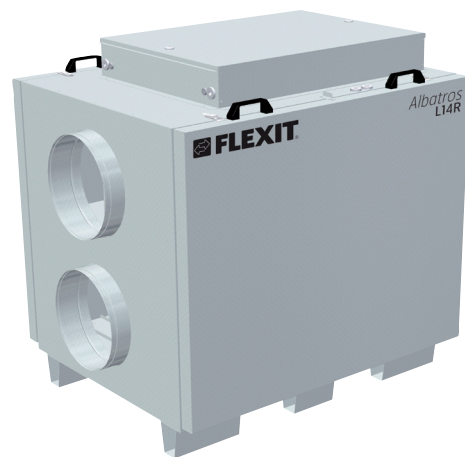


Luftbehandlingsaggregat *Albatros* **L14 R**

- Flexibel – impossible to order incorrectly
- Compact – access through 80 cm wide door
- Energy efficient
- Low noise level



Full flexibility. Easy adaptation to different applications.

The unit is delivered as a right hand model but can very easily be changed into a left hand model on site.

Heater battery (electrical or water) is supplied separately and can easily be fitted/changed at site. This ensures safe, fast delivery and cost savings at possible changes in project or mistakes when ordering.

Fast delivery.

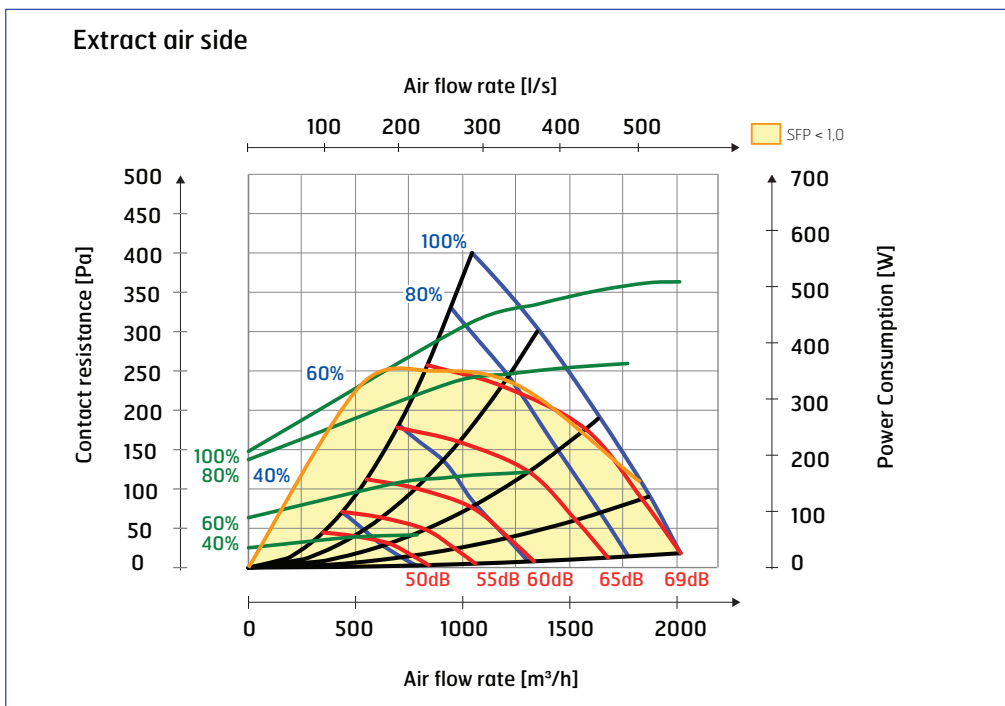
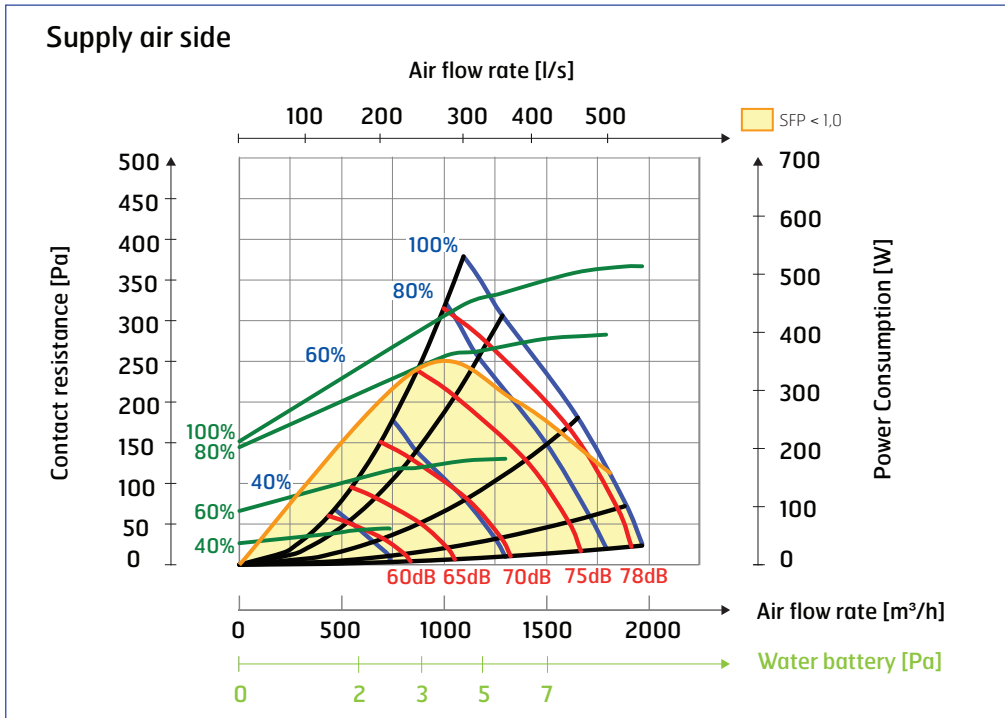
Flexit L14R is produced against stock and will consequently have a very short delivery time.

Energy efficient with low noise level.

The unit is energy efficient and fulfills demands set in building directive TEK10. In addition the unit has a very low noise level.

Easy access into buildings.

The unit is compact and can be transported in through an 80 cm wide opening.



Sound data is given at sound power level L_{WA} in the capacity diagrams and is corrected with the table below for the various octave bands. Radiated noise produces L_w in the various octave bands and total L_{WA}. Radiated noise is calculated by taking the noise value from the supply air table and deducting the total value from the correction factor table.

Supply air data is measured in accordance with ISO 5136 «In duct method»
 Radiated noise is measured in accordance with ISO 9614-2
 Bruel & Kjaer measurement, type 2260.

Curves in diagram:

- Blue: Air volume in different capacity setting in %.
- Green: Power consumption in Watt, read the scale to the right.
- Red: Sound - indicate sound level L_{WA}.

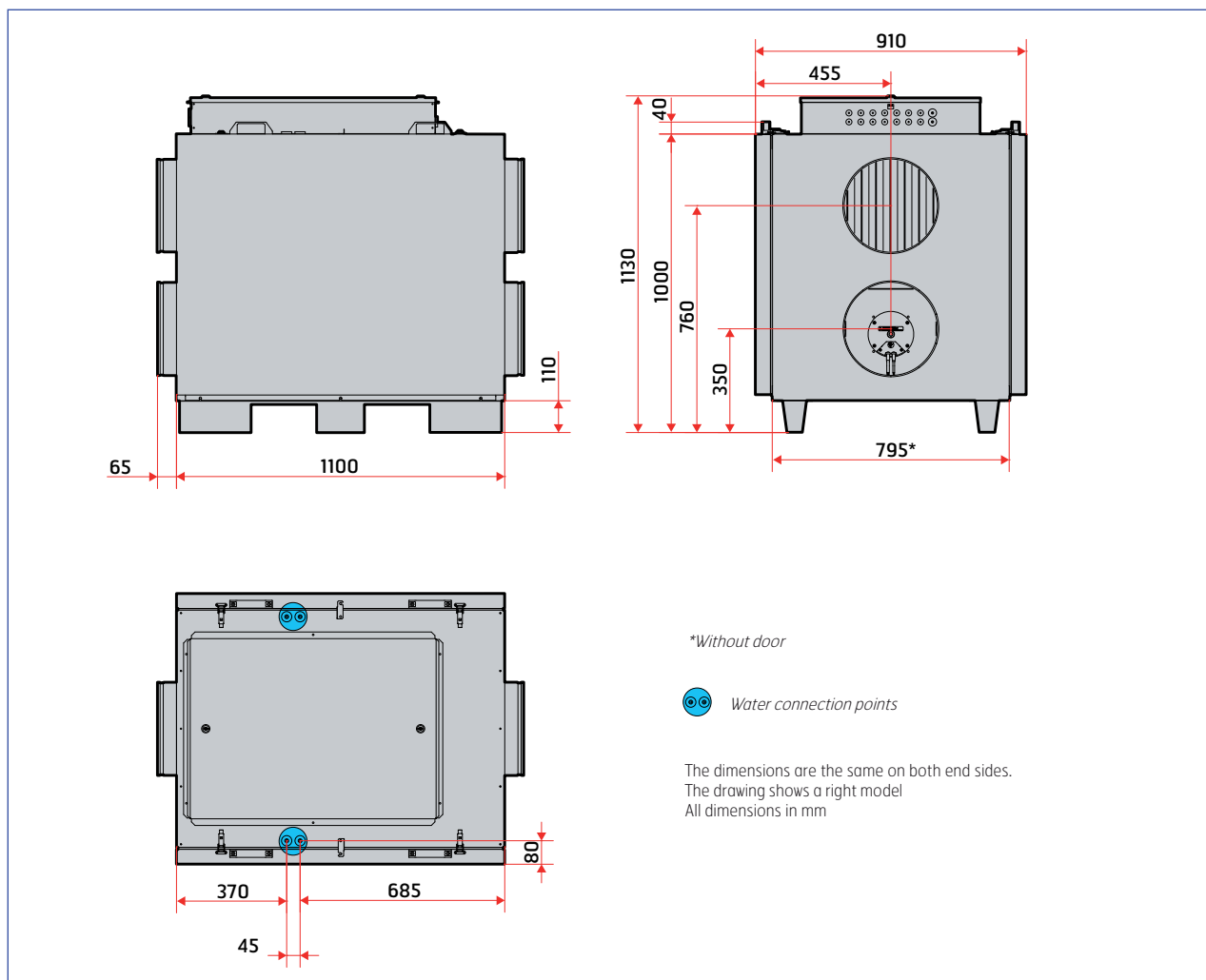
Correction factor for L_w

Hz	63	125	250	500	1000	2000	4000	8000	L _{WA}
Supply	8	7	-2	-5	-5	-11	-19	-18	
Extract	13	9	3	-6	-9	-16	-22	-26	
Radiated	-36	-27	-20	-28	-31	-31	-33	-43	-22,3

L14 R

	Electric battery	Water battery
Rated voltage	400V	400V
Fuse size	3 x 16A	3 x 10A
Rated current, total	13 A	7 A
Rated power, total	5600 W	1100 W
Rated power, electric battery	4500 W	-
Rated power, fans	2 x 470 W (230V)	2 x 470 W (230V)
Fan type	B-wheel	B-wheel
Fan motor control	0-10V	0-10V
Max. fan speed	2530 rpm	2530 rpm
Filter type	F7 compact filter	F7 compact filter
Filter dimensions (WxHxD mm)	2 x (795x380x85)	2 x (795x380x85)
Duct connection	Ø 315 mm	Ø 315 mm
Height	1130 mm	1130 mm
Width	1230 mm	1230 mm
Depth (with handles)	910 mm	910 mm
Depth (without door)	795 mm	795 mm

Gross unit weight	Fan	Heat recovery system	Doors
179 kg	2 x 9 kg	43,5 kg	4 x 16 kg



L14 R - AHU and accessories

15841	Air handling unit L14R incl. Control panel CS 2000
110624	Filter set F7
112639	Electric battery complete
113068	Water heating element, complete
14477	Closing air damper on/off Ø315 mm
14478	Closing air damper spring Ø315 mm
56432	Shunt valve, KVS 1,6 2-way proff
56232	Shunt valve, KVS 1,6 3-way proff
57228	Shunt valve, KVS 2,5 3-way proff
56072	Adapter for art.no. 57228
56234	Motor shunt valve
	Combi battery (Ask for calculation)
	Cooling battery (Ask for calculation)



Filter set F7



Electric battery



Water heating element



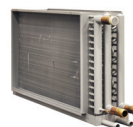
Closing air damper



Shunt valve



Motor shunt valve



Combi battery



Cooling battery

Accessories Control system

112434	Room sensor CS 2000
112435	Modbus, communication module
112436	Web, communication module
112437	LON, communication module
112438	BACnet IP, communication module
112439	Expansion module 14 IO
112440	Energy meter
112441	Timer, mechanical
112442	Timer, electronic
112444	Pressure sensor, 500 Pa
112445	Pressure sensor, 3000 Pa
09364	Press button
09368	Room sensor CC 1040
09369	Outdoor sensor CC 1041
09390	Motion detector SP 450
09358	Motion detector SP 435
09861	Smoke detector SP 445
09359	CO ₂ -sensor SP 440



Room sensor CS 2000



Modbus



Web



LON



BACnet IP



Expansion module 14 IO



Energy meter



Timer mechanical



Timer electronic



Pressure sensor



Press button



Room sensor CC 1040



Outdoor sensor CC 1041



Motion detector SP 450



Motion detector SP 435



Smoke detector SP 445



CO₂-sensor SP 440